

**JYOTI**

SINCE - 1987

Your Total Sheet Metal Systems Partner

# Business Presentation

Date : 05-Sept-2023

# Agenda

01

## General Overview

Organization structure & a brief history of how everything was started. Plant & customer details

02

## Engineering Services

Turnkey Project , Project Management , Assembly Solutions etc.

03

## Design Capabilities

Design process which we follow to ensure high quality standards

04

## Dies & Toolings

Tool room capabilities to manufacture Dies , Jigs , Fixtures , Welding units & automations

05

## Stamping & Fabraction Plants

Making & delivering high Quality Stamping Child parts, welding assemblies etc.

06

## Tool Making@ Jyoti , Quality & CSR

Case Study for Design & Manufacturing



Your Total Sheet Metal Systems Partner



# General Overview

Organization structure & a brief history of how everything was started.

Plant & customer details

# Corporate Structure

*Jyoti SolutionsWorks Pvt Ltd., is an existing Sheet Metal stamping & Welded Sub- Assemblies manufacturing company serving various OEM's like Tata Motors, TVSM, Royal Enfield, Daimler, from their Pune & Chennai facilities.*

## Unit I - Head Office (Pune , Bhosari MIDC)

Corporate Office  
Design/ Engineering Center  
Medium Tooling's Shop  
25,000 Sq. Ft. Area



## Unit II (Pune , Moshi MIDC)

Heavy Tooling's Shop  
Pattern Shop  
Prototyping Center  
150,000 Sq. ft.



## Unit V - (Pune , Talegaon MIDC)

Heavy Shearing , Plasma  
Cutting & Sheet Metal supply  
5,25,000 Sq Ft. Area



## Unit IV (Chennai, SPICOT Sriperumbudur)

Stampings Line.  
Welding Line.  
200,000 Sq. Ft Area



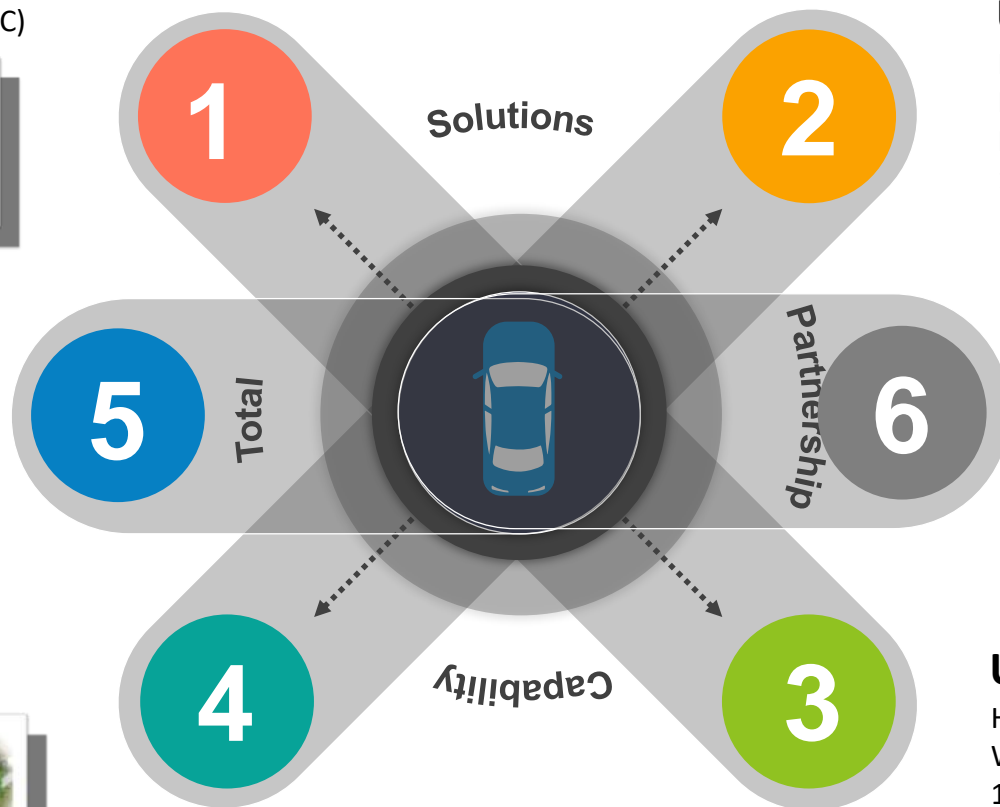
## Unit VI (Akurdi , Pune)

Technology Centre



## Unit III (Pune , Markal MIDC)

Heavy Stampings Line.  
Welding Line.  
150,000 Sq. ft.





# Our Founder & Chairman



**Jyoti Group** is emerging & aiming towards becoming a complete one-stop-shop solution for sheet metal tooling solutions. . Jyoti Group believes in quality management system to ensure continual improvement of products, processes & resources through the PDCA cycle.

At Jyoti, we believes in core strengths such as design, manufacturing & delivering services backed with experts and a skilled workforce inline with Quality delivery of solutions as per customers requirement.

Mr T. Karuppiah

# Management Team



**Nithyanand Thevar  
(MD)**

- Qualification :  
BE ( Mech ) , DME
- Exp : 30 Yrs +
- Sheet Metal Solutions  
( Tool Development ,  
Stamping , Welding )



**Vijaya Bhaskar**

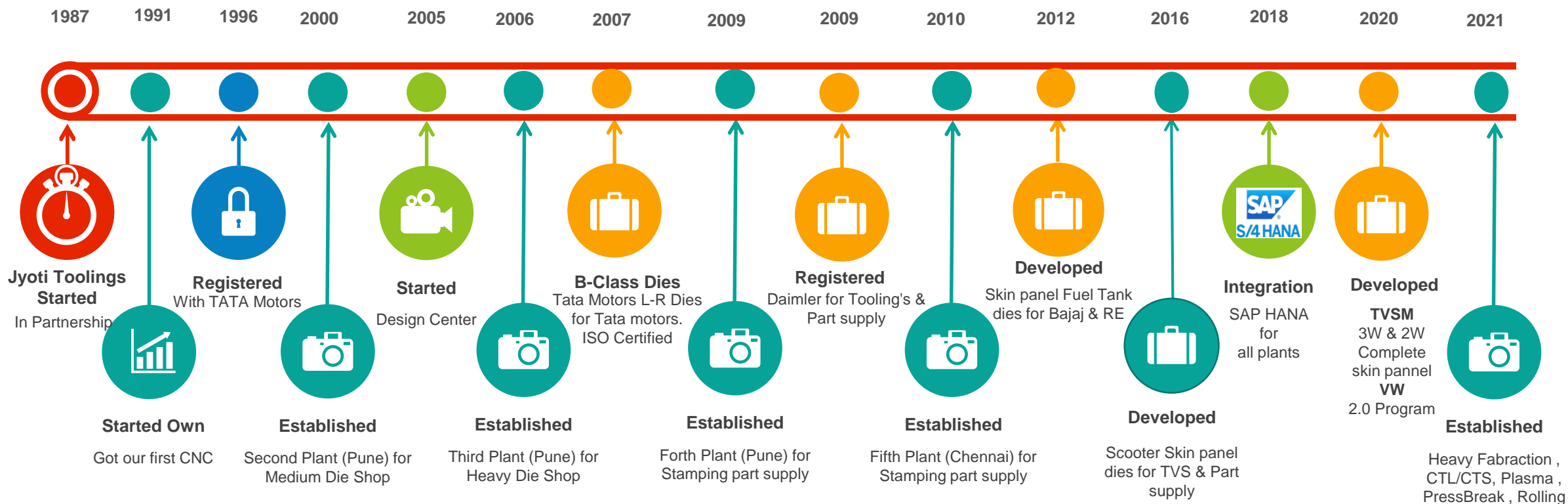
- Qualification :  
BE (Mech) , MS –  
Mgf Mgmt(BITS  
Pilani) , MBA ( SP-Jain)
- Exp : 30 Yrs +
- Technical Director
- Jyoti , Godrej ,  
Kinetic



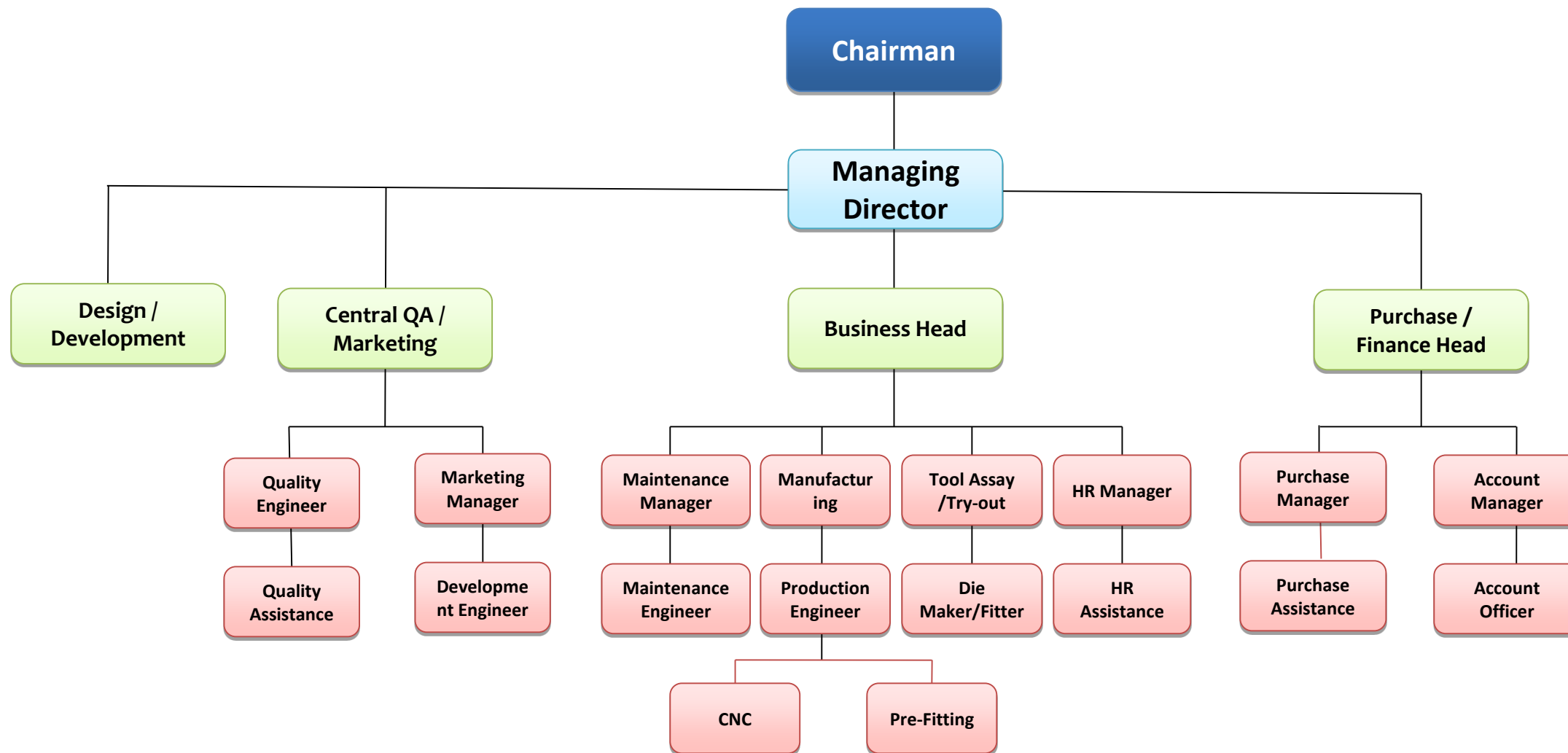
**Yogesh Mishra**

- Qualification :  
BE(Mech),  
**MBA (IIMK)**
- Exp : 23 Yrs +
- Marketing , IT
- MTS , IBM ,  
Tech Mahindra

# A Brief History



# Organization Management



# Some Clientele



Maruti Suzuki Ltd.



Ashok Leyland Ltd.



Tata Motors Ltd.



Mahindra & Mahindra Ltd.



AAM Ltd..



Renault Nissan



Magna Cosma International Ltd



Suzuki Motorcycle



Royal Enfield Ltd.



Bajaj Auto Ltd.



TVS Motors Ltd.



PIAGGIO

Piaggio Vehicles Pvt. Ltd.



Toyota

EV  
Customers



ALTI Green



Kabira Mobility



BGAUSS



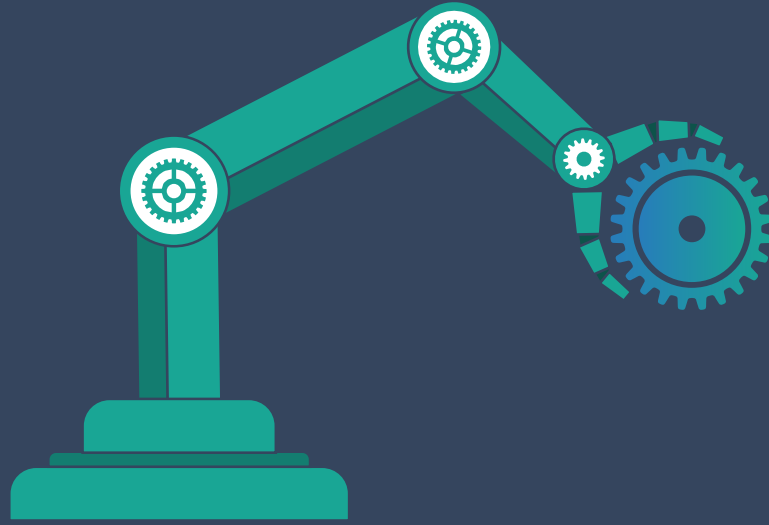
AMPERE



TICM – Montra Electric



Euler Motors



# Engineering Services

Turnkey Project , Project Management , Assembly solutions etc.

# Capabilities

Transform Your Projects and Operations

## Total Solution Partner

The engineering services is indispensable for the support of industries in defence, automobile, railways, infrastructure etc. With the changes in nature of markets where industrial activity is growing vigorously, companies are forced to devise new strategies to counter low-cost competition and cyclic changes in demand.

### Turnkey Solution

Jyoti's engineering-based program combines industry expertise, consulting services, our comprehensive automation technologies portfolio and Industrial IoT solutions. Right from support from Sheet metal Tooling Design to Delivering Welding or Painted output.

### Project Management

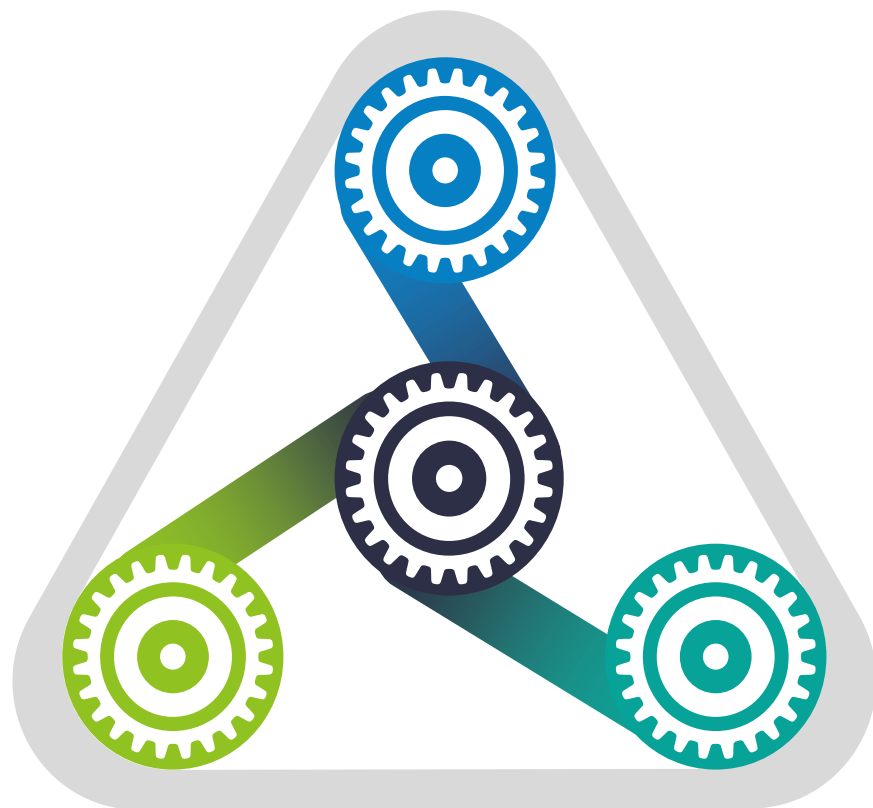
Jyoti tooling's engagements include Business Process management, Project management, Performance management, Business transformation among others. We create client engagements specific to the needs of each client which has helped us to consistently deliver excellent results.

### Assembly Solutions

Development of Products, Commissioning of toolings with Machine, Welding Fixtures solutions, fulfilling Powder Coating requirements.

### Consulting

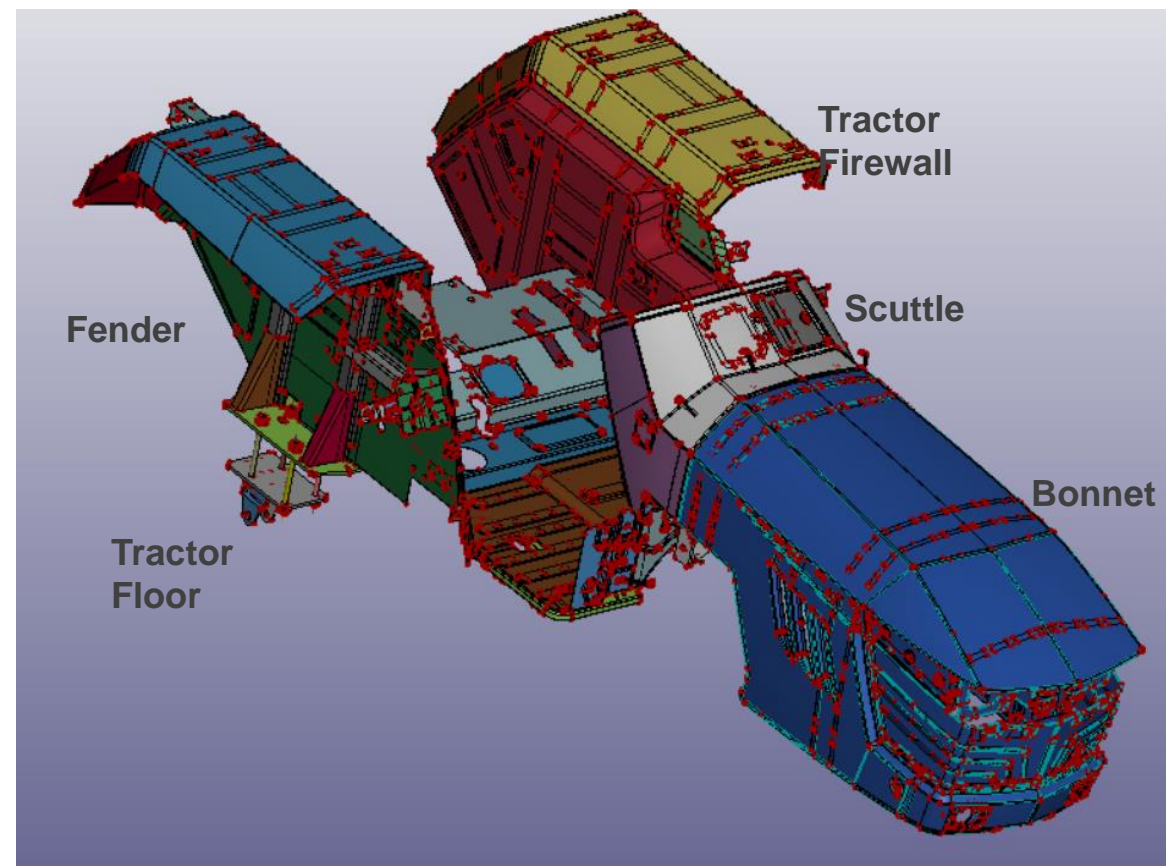
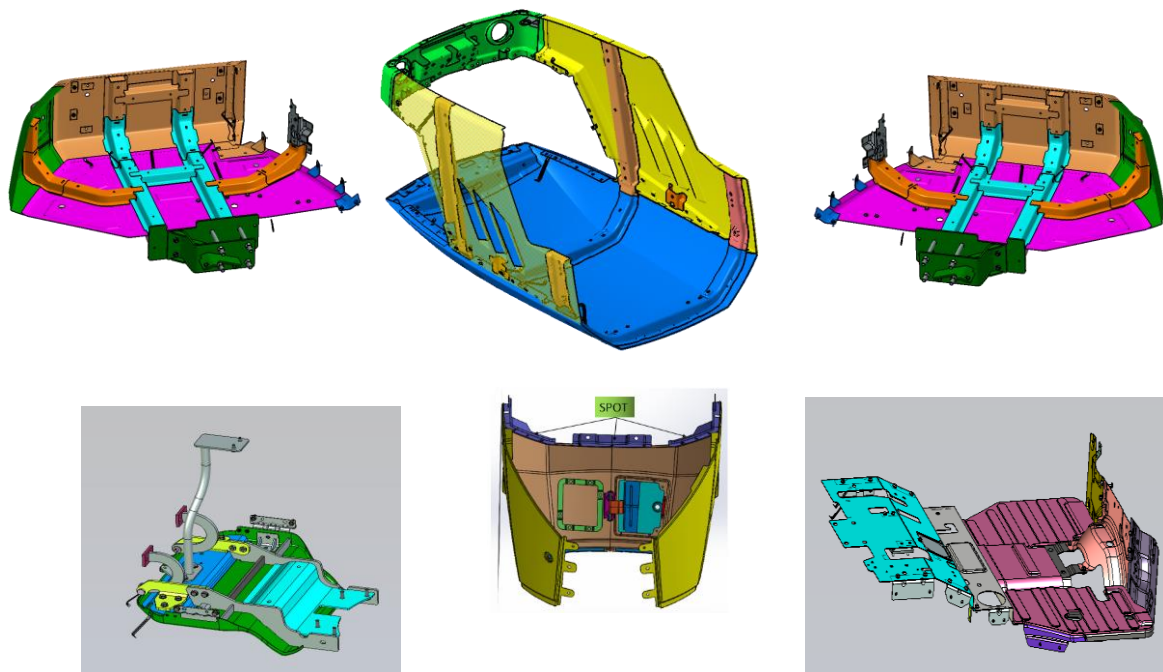
New product development, Packaging design, Reverse engineering, Simulations for new products, Development of Import substitute products, Design Services





# Sample Turnkey Solutions

## Assembly Welding Solutions



167 Parts – 355 Dies

50 Welding Fixtures , 205 Weld Nut , 165 Bolts ,  
36 Wire Harness Clamps , 25 Machined Parts



# Sample Turnkey Solutions



# End to End Solution - EV Scooter



**All Metal  
Parts**

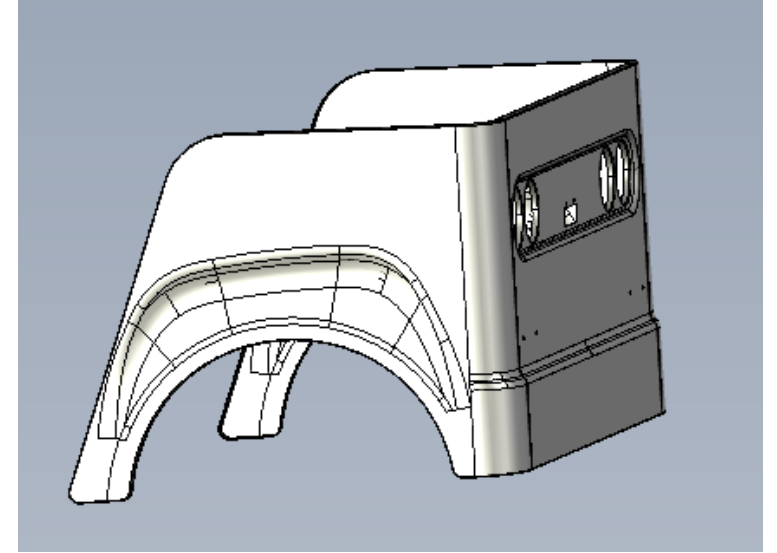
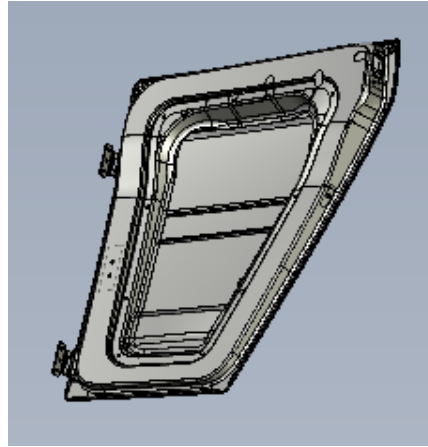
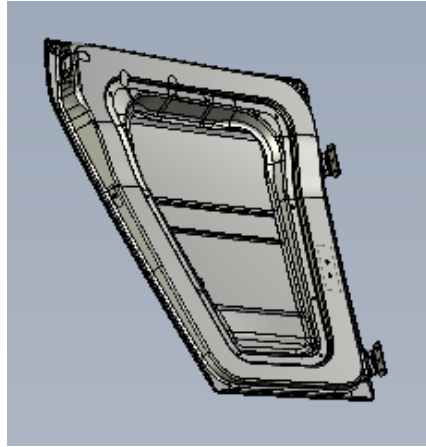
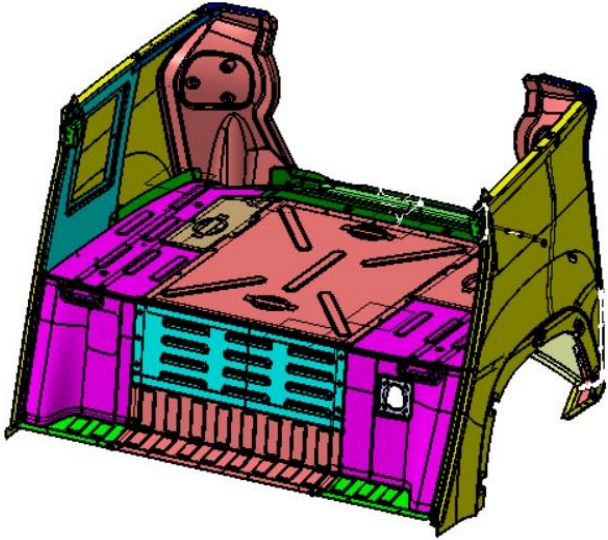
Simulation & Design  
Feasibility

Tool Development

Stamping , Welding ,  
Development of  
Pallets

CED Coating,  
Painting & Logistics  
handling

# End to End Solution – 3-W EV Solution



Simulation & Design  
Feasibility

Tool Development

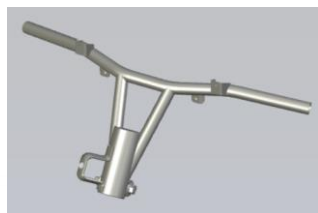
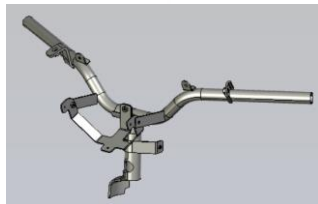
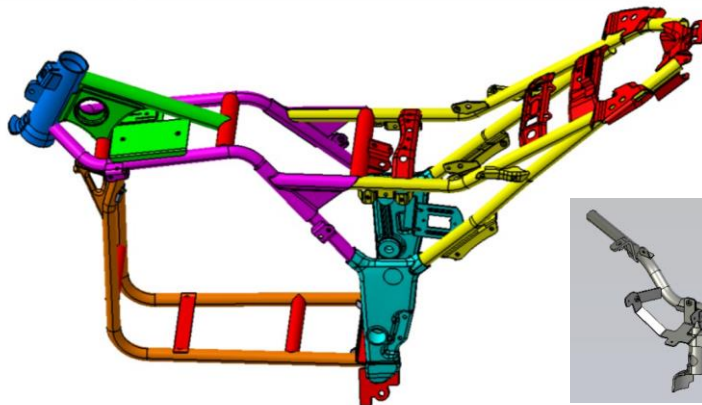
Stamping , Welding ,  
Development of  
Pallets

CED Coating,  
Painting & Logistics  
handling

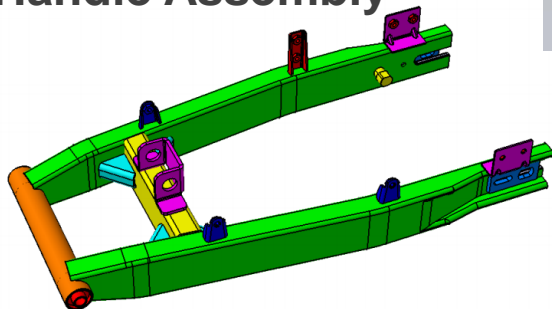
# Sample EV Solutions

Complete Welding Solutions for Frames

## 2-W Chassis Solutions with Robotic Welding line



## 2-W Swing Arm & Handle Assembly



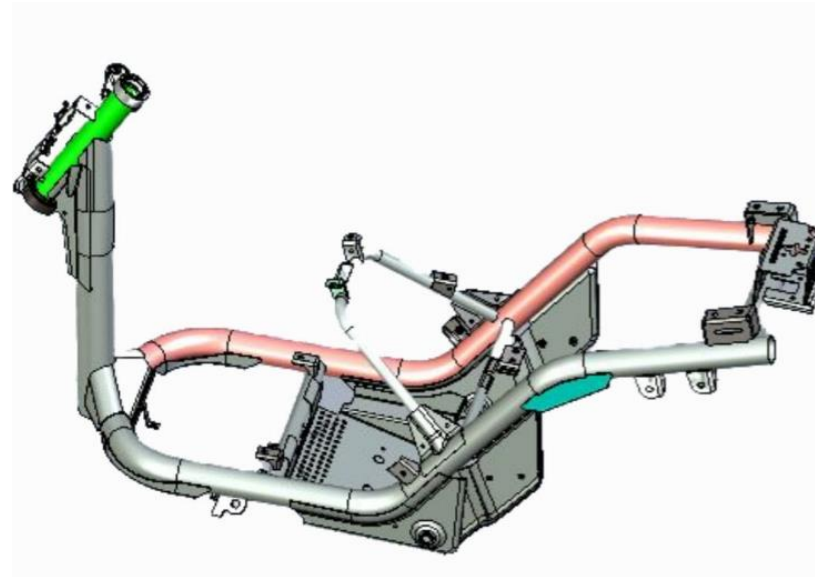
## 3-W Frame Chasis Solutions





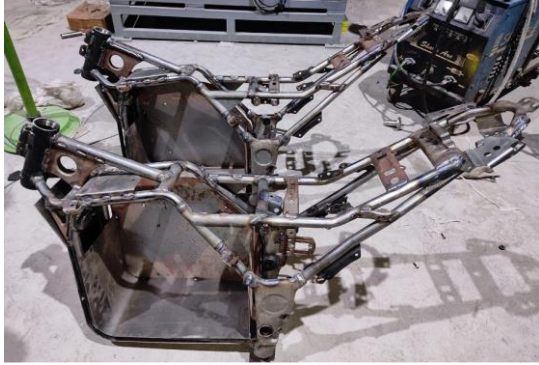
# Sample EV Solutions

Complete Welding Solutions for Frames



**Development Chassis**

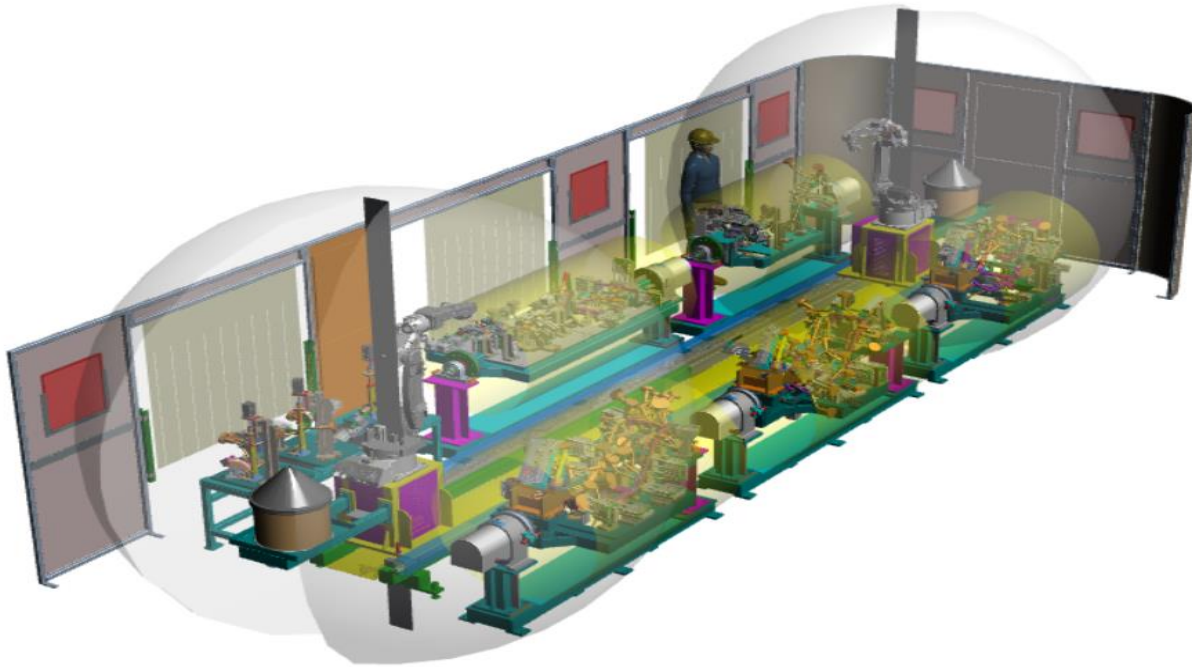
# Chassis & Swing Arm - Successfully delivered via Manual method





# Chasis- Robotic Line

For Precise part production



# Chasis- Robotic Line

For Precise part production



[www.jyotisolutionsworks.com](http://www.jyotisolutionsworks.com)



Total Solution Partners



# Chasis- Robotic Line

For Precise part production



# Sample EV Solutions

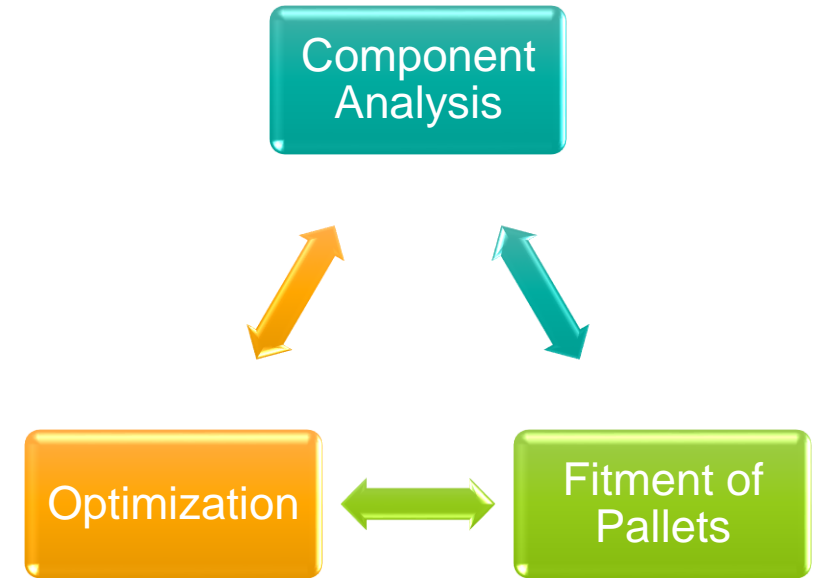
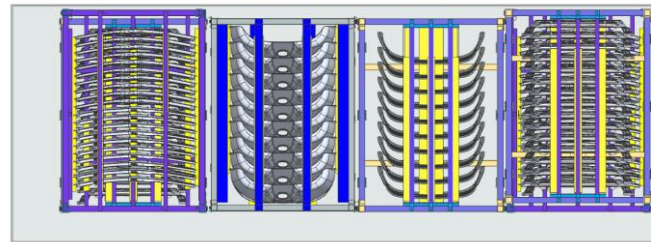
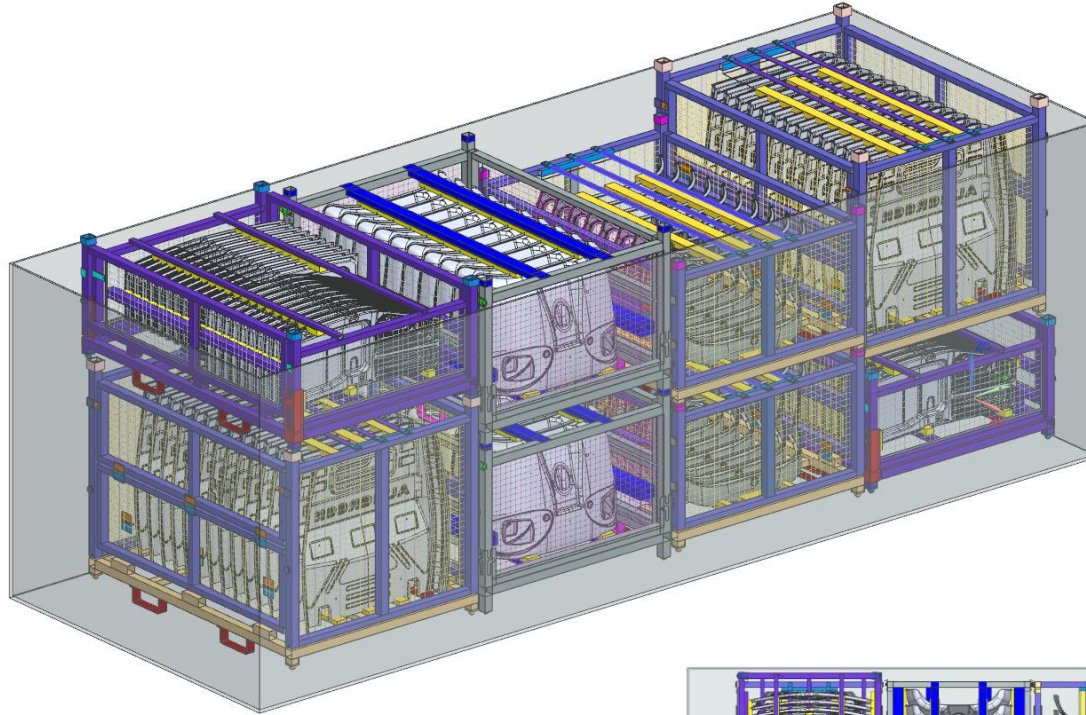
## Transportation Delivery Solutions





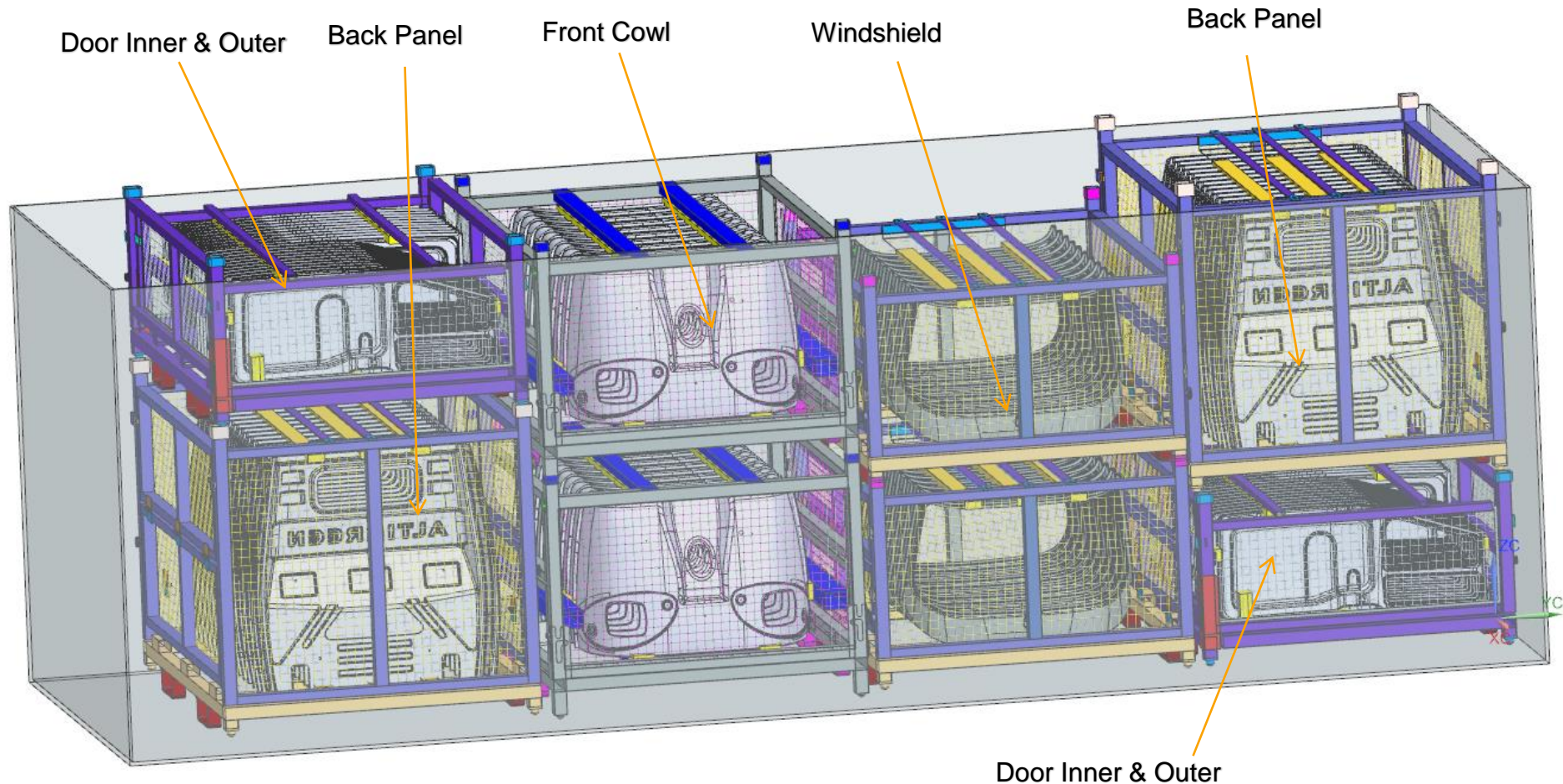
# Sample EV Solutions

## Transportation Delivery Solutions



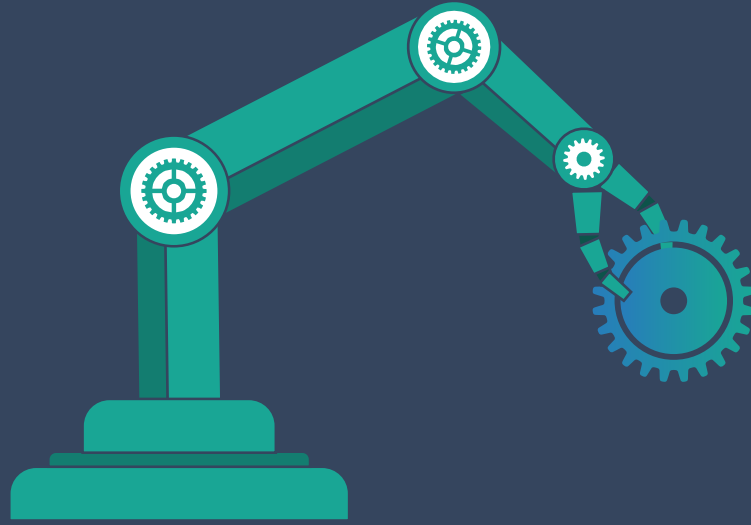
# Sample EV Solutions

Optimised Pallet wise arrangement in vehicle



Door Inner & Outer





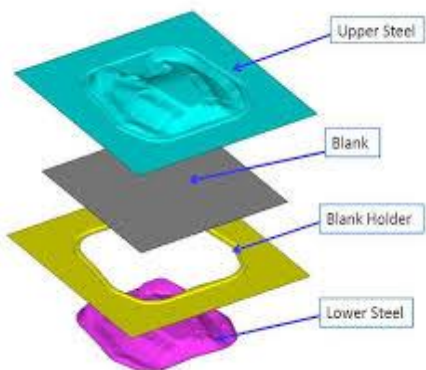
# Design Capabilities

Product definition & Design process which we follow to ensure high quality standards



# Design Services

## Manufacturing Optimization

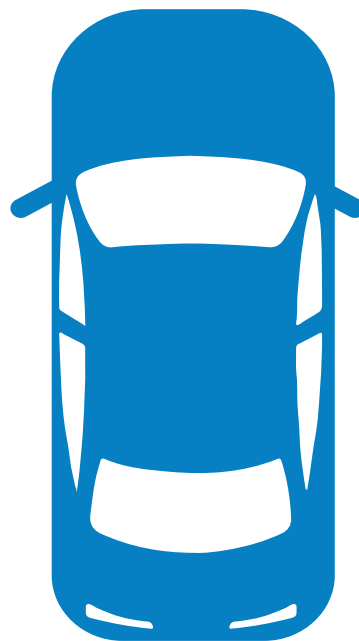


Combine Operation,  
Blank Optimization,  
Optimum Tool Structure,  
100% 3D Design



## Project Development

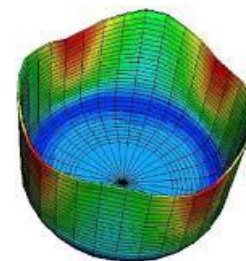
Economical & technical viability Study ,  
Analysis of technical norms & standards ,  
Customer Requirements , Material  
development , Software Prototyping



End to End Design  
Solution

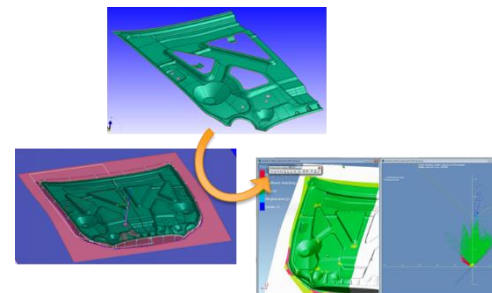
## Simulation Studies

Draw Simulation, Forming Simulation,  
Spring Back Analysis, Past project  
references.



## Process Development

Process Feasibility , Production  
Equipment Development , Validation &  
Certification , Die & Fixture Development,  
Safety Engineering



# Design Software Capabilities

No's of  
Licences

## Design



For Product Design,  
Surface activities &  
Tool Design

6-Catia  
6- UG-NX  
2 - Solidworks

## Simulation



For Simulation  
& Springback

1- LS Dina  
1- Pam Stamp  
1- Hyperform  
Subscription- Autoform

## Engineering



For 2-D &  
Engineering  
reviews

5- Autocad  
2- DraftSight  
30- EDrawing

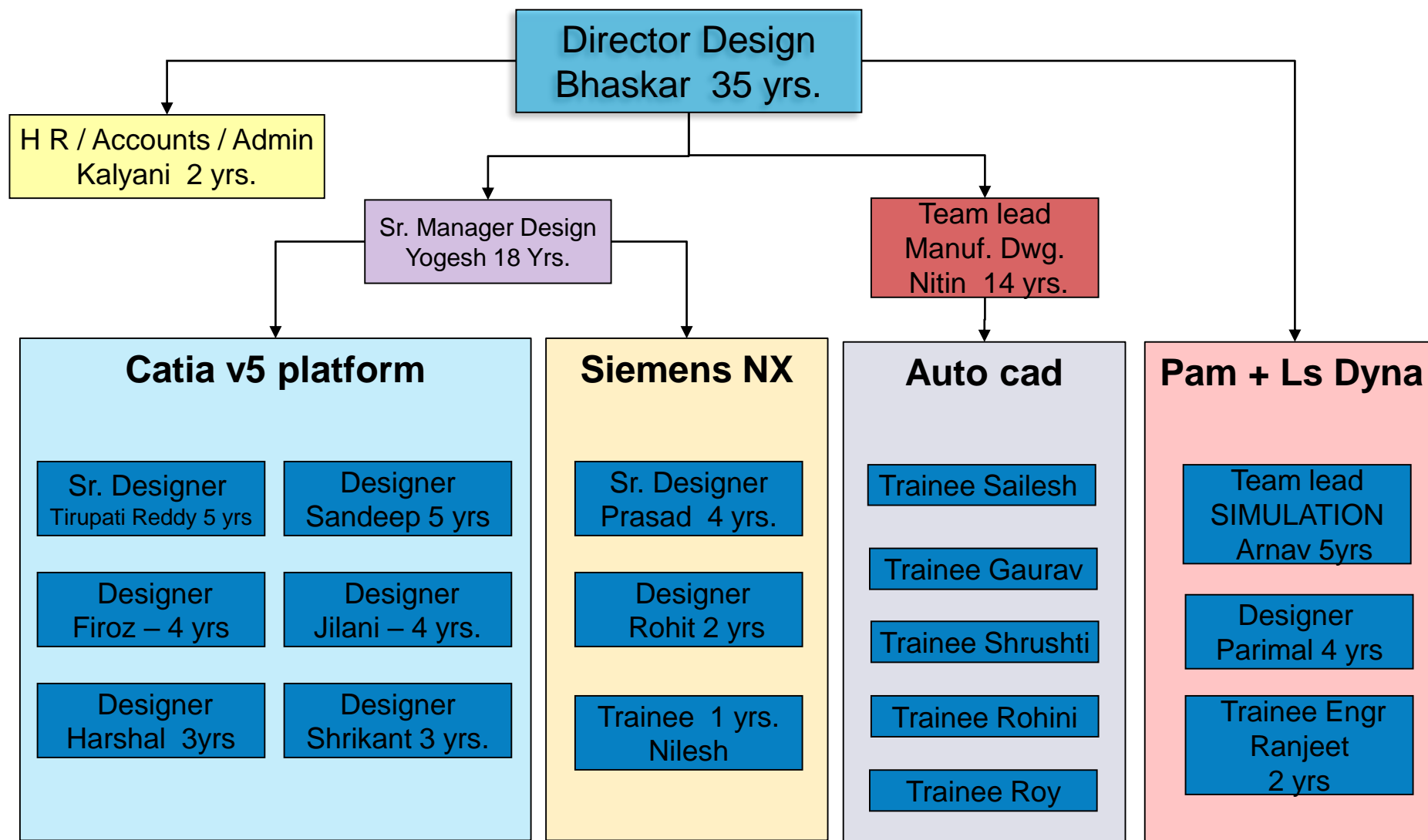
## CAM & Others



For CAM &  
Manufacturing  
activities

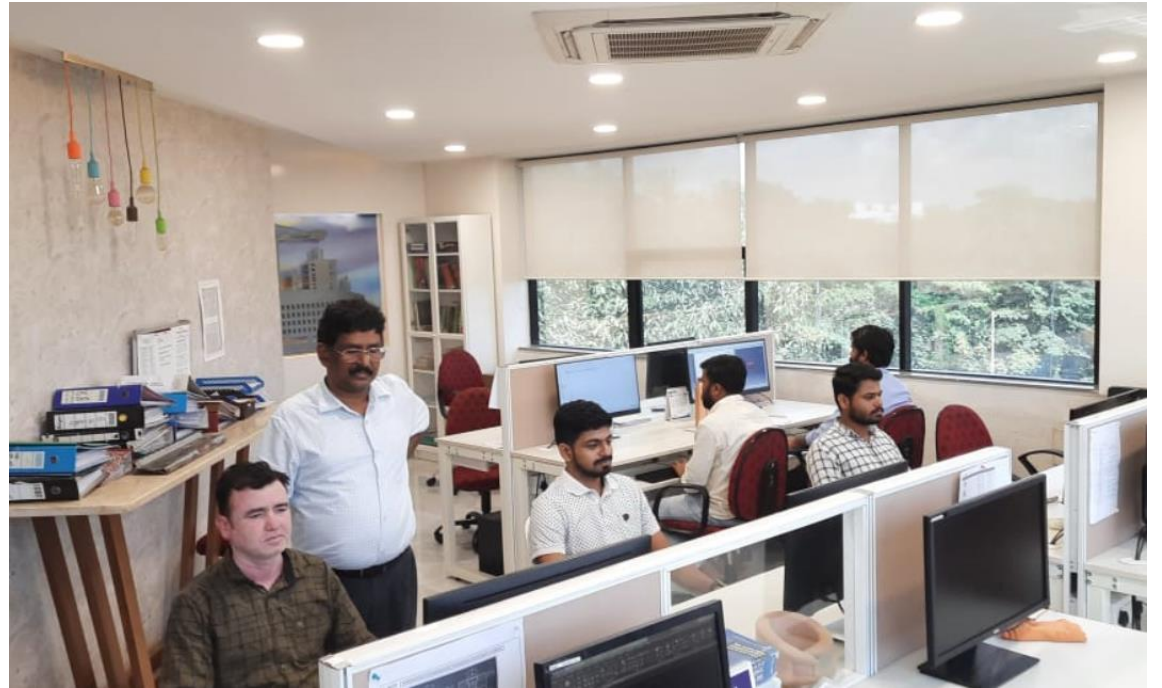
5- DelCam  
6- PowerMill

# Design Team Structure

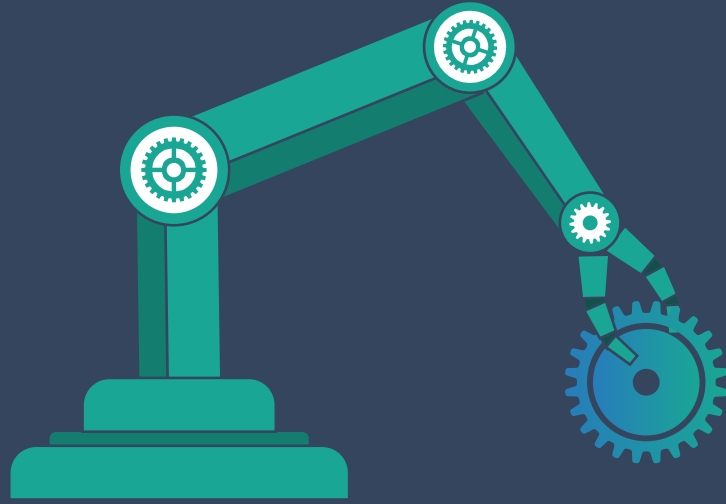




# Our Design Studio



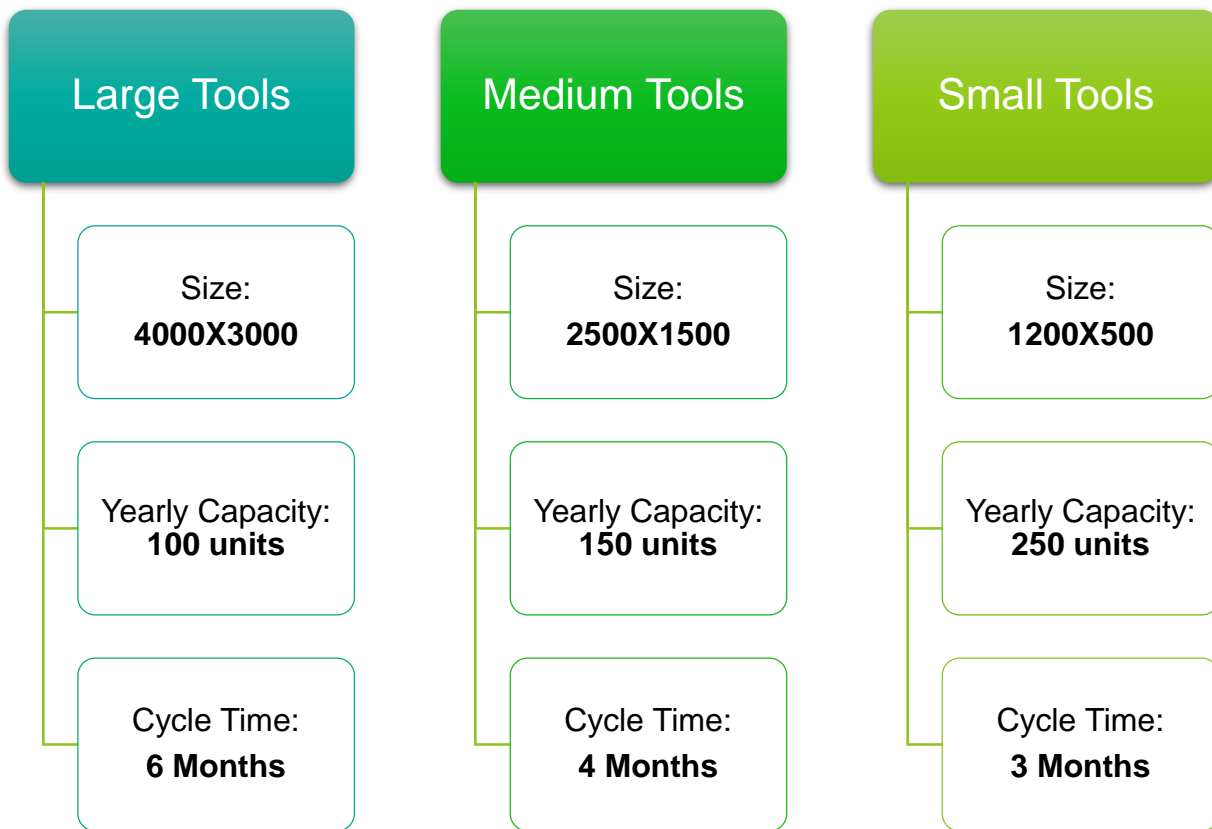
Complete Technical Design ONE-STOP Solution



# Dies & Toolings

Tool room capabilities to manufacture Dies , Jigs , Fixtures , Welding units & automations

# Capacity



**Revenue 2021-22 : 25 million Dollars ( Jyoti Group )**

## Company Manpower



- Workers & Operators
- Engineering & Staff
- Design
- Managers

**Total : 380 team members**

**Design : 28 Members**

**Tool Room : 180 Members**

**Stamping : 202 Members**

# Our Manufacturing Plant -1



**Moshi Plant**

## Heavy Die Shop – MIDC Moshi, Pune

Manufacturing from 2 meter to 4.5 meter length of dies. With a range of presses – hydraulic and **CMM** with other required equipment of international standard, the plants have complete capabilities for making complex sheet metal components assemblies of different sizes.

### Capability

#### Capacity :

65 T of dies per Month

12 Dies / Per month

#### Machines :

5 CNC ( from 4 Mtr. to 1.6 Mtr. In size)

All types Conventional Machines.

4 Try-out Press (1000T, 500T, 400T, 400T)

CMM M/c, Pattern Shop.

#### Strength :

Body Floor Parts. Dash Assay, Wheel House, Door Inner, Bonnets, Auto Tail Door, Reinforcements, Side Panels etc.



# New Asset Addition

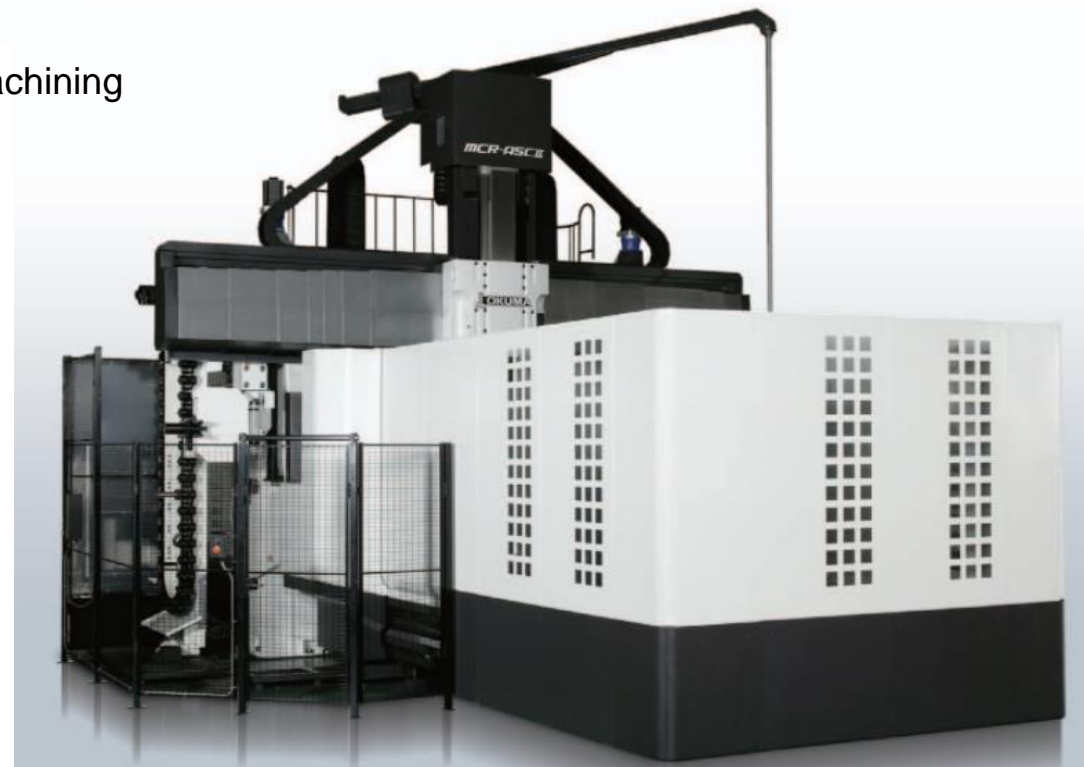


Double-Column Machining Center  
***MCR-ASCII***  
[For 5-Sided Applications]

Arrived in Aug-2022

Hugely expanded range for powerful 5-face machining

Element	Specifications
Control	X - 4500, Y - 2000, Z - 800, W simultaneous 4-axis, spindle control (1 axis )
Position feedback	OSP full range absolute position feedback (zero point return not required)
Coordinate functions	Machine coordinate system (1 set), work coordinate system (20 sets)
Min / Max inputs	8-digit decimal, $\pm 99999.999$ to $0.001$ mm ( $\pm 3937.0078$ to $0.0001$ in.), $0.001^\circ$ Decimal: $1\text{ }\mu\text{m}$ , $10\text{ }\mu\text{m}$ , $1\text{ mm}$ ( $0.0001, 1\text{ in.}$ ) ( $1^\circ$ , $0.01^\circ$ , $0.001^\circ$ )
Feed	Override: 0 to 200%, rapid traverse override: 0% to 100%
Spindle control	Direct spindle speed commands, override 30 to 300%, multi-point indexing
Tool compensation	No. of registered tools: Max 999 sets, tool length/radius compensation: 3 sets per tool
Self-diagnostics	Automatic diagnostics and display of program, operation, machine, and NC system problems





# Our Manufacturing Plant -2



**Corporate Office**

## Medium Die Shop – MIDC Bhosari, Pune

Manufacturing from 1 meter. to 2 meter length of dies & has extensive manufacturing capability to meet the demands of a large segment of the automotive industry..

### Capability

**Capacity :**

35 T of dies per Month  
10 Dies / Per month.

**Machines :**

3 CNC ( from 3 Mtr. to 1 Mtr. In size)  
All types Conventional Machines.  
3 Try-out Spotting Press (500T,250T,200T)

**Strength :**

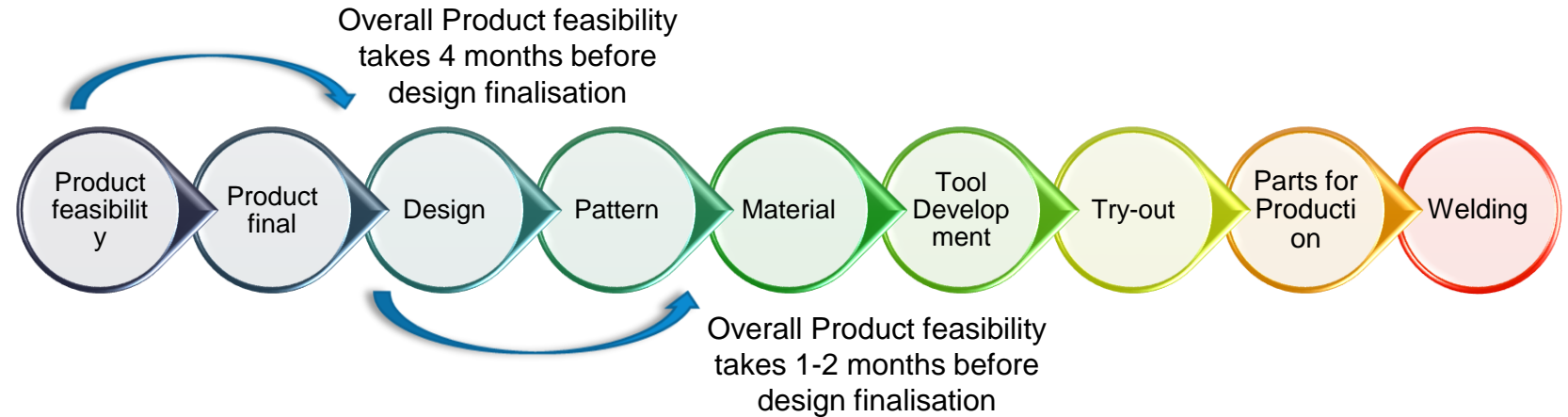
Body Fuel Tank Die for Motorcycle.  
Side Panel & Fender Dies for Scooter.  
High Tensile Steel parts Dies.



# What Jyoti Can offer

## Regular Development process

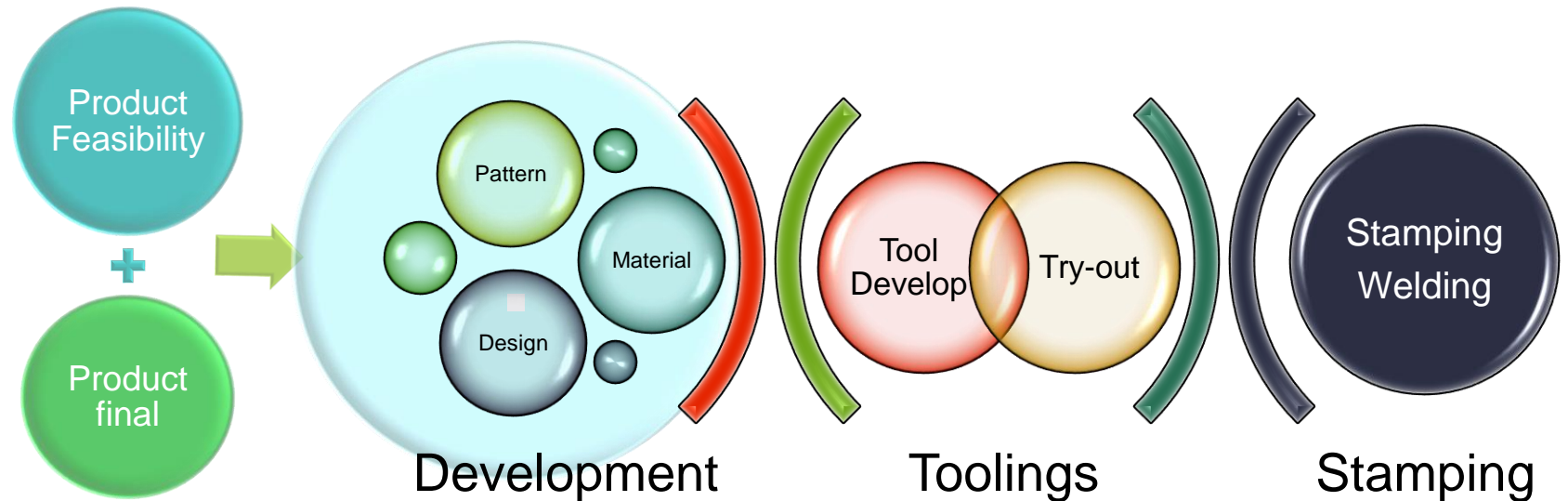
This is followed in the sequential order, and so project development team only moves to next phase of development or testing if the previous step completed successfully.



## Jyoti's Development process

At Jyoti we follow the practice that helps continuous iteration of development and parallel processing for multiple activities. It is focused client process. So, it makes sure that the client is continuously involved during every stage. This saves a lot of development time.

This gives almost 20% minimum cost advantage to the customer while we take end to end ownership of the project



# Sample Tooling Products

## TOOLINGS PRODUCTS

Car body parts Tooling's

Scooter body parts Tooling's

Motorcycle body parts Tooling's

High tensile steel part Tooling's

Off Roader body part Tooling's

Three Wheeler part Tooling's

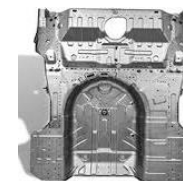
Truck body parts Tooling's



Door Inner L/R  
**TATA**  
Tandem Die – t 0.8 mm



FRONT FLOOR  
**MARUTI**  
Transfer Die – t 0.9 mm



RR FLOOR RR  
& FR FLOOR  
**MARUTI**  
Transfer Die – (2 Out)



Panel Rear  
**HONDA**  
Transfer Die – t 0.6 mm



Bumper  
**VW**  
Tandem Die – t 1.0 mm.



Mbr. RR Seat Cross  
**RENAULT**  
Transfer Die – t 1.2 mm



Dash Lower  
**GM**  
Tandem Die – t 7.0 mm.



Fr W/H Upp L/R  
**HONDA**  
Transfer Die – 590 S.S.



Wheel House L/R  
**HONDA**  
Tandem Die – t 0.7 mm

Tandem & Transfer Tooling's for high volume production. All Floor Dies made for Maruti, Wheel Houses L/R made for Honda, M&M, Dash Panel dies made for GM.



# Sample Tooling Products

## TOOLINGS PRODUCTS

Car body parts Tooling's

**Scooter body parts Tooling's**

Motorcycle body parts Tooling's

High tensile steel part Tooling's

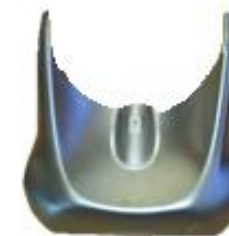
Off Roader body part Tooling's

Three Wheeler part Tooling's

Truck body parts Tooling's



Fr, Fender



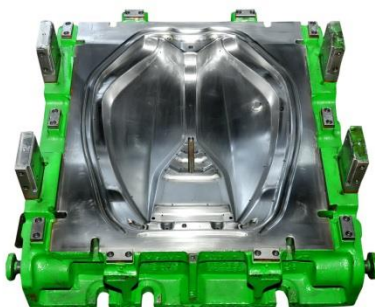
Bottom Panel



L/R Side Panel



Top Panel



# Sample Tooling Products

## TOOLINGS PRODUCTS

Car body parts Tooling's

Scooter body parts Tooling's

**Motorcycle body parts Tooling's**

High tensile steel part Tooling's

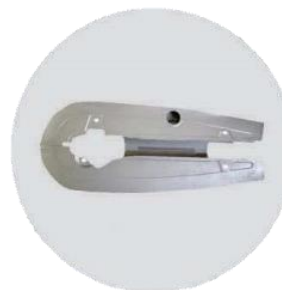
Off Roader body part Tooling's

Three Wheeler part Tooling's

Truck body parts Tooling's



Tandem & Transfer Tooling's for high volume production.  
Fuel Tank 10 Set of Dies made successfully



Chain Case



Body, Fuel Tank



L/R Side Panel



Silencer Guard



# Sample Tooling Products

## TOOLINGS PRODUCTS

Car body parts Tooling's

Scooter body parts Tooling's

Motorcycle body parts Tooling's

High tensile steel part Tooling's

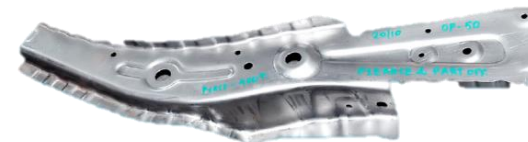
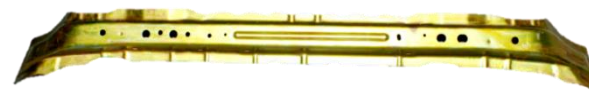
Off Roader body part Tooling's

Three Wheeler part Tooling's

Truck body parts Tooling's



Tandem & Transfer Tooling's for high volume production.  
Max. 980 Tensile steel dies made



# Sample Tooling Products

## TOOLINGS PRODUCTS

Car body parts Tooling's

Scooter body parts Tooling's

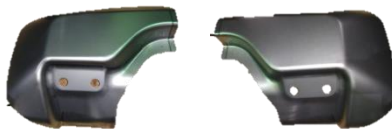
Motorcycle body parts Tooling's

High tensile steel part Tooling's

Off Roader body part Tooling's

Three Wheeler part Tooling's

Truck body parts Tooling's



Tractor Body Bonnet, Side Panel Die.



# Sample Tooling Products

## TOOLINGS PRODUCTS

Car body parts Tooling's

Scooter body parts Tooling's

Motorcycle body parts Tooling's

High tensile steel part Tooling's

Tractor body part Tooling's

**Three Wheeler part Tooling's**

Truck body parts Tooling's



# Sample Tooling Products

## TOOLINGS PRODUCTS

Car body parts Tooling's

Scooter body parts Tooling's

Motorcycle body parts Tooling's

High tensile steel part Tooling's

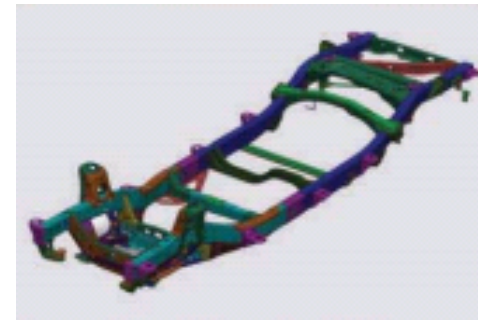
Tractor body part Tooling's

Three Wheeler part Tooling's

**Truck body parts Tooling's**



CABIN PART'S

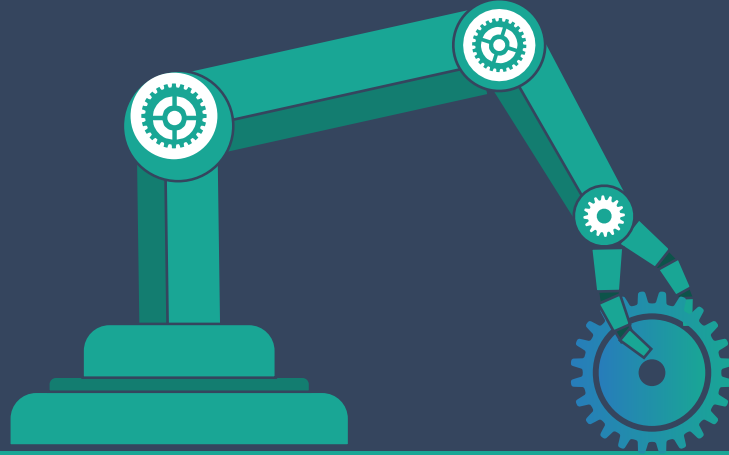


CHASSIS PARTS



3 Piece Bumper





# Stamping

Making & delivering high Quality Stamping Child parts, welding assemblies etc.



# Our Stamping Plant -3



**Markal Unit**

## Press Shop – MIDC Markal, Pune

Capacity up to 1000T press for Heavy Stamping with welding assembly capability. A facility designed and maintained to deliver quality products

### Capability

#### Machine List :

1000T-600T-500T Mech. Press Line - 1  
800T-500T-500T Mech. Press Line - 2  
Welding Line

#### Products :

Cross Beam Assy, CM Rack & Pinion Assy, AC Mounting Bracket Assy, Shock Absorber & Cab Mtg, Y1 Truck Assy.

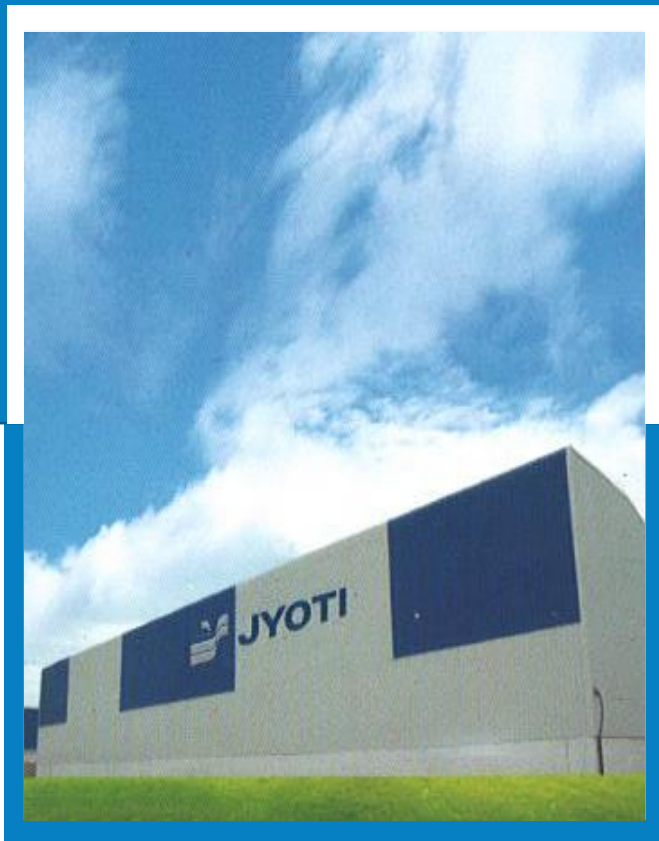
#### Customer :

Daimler, Tata Motors, JBM Group, Mungi, Takshi





# Our Stamping Plant -4



## Chennai Unit

### Press Shop – Sriperumbudur, Chennai

Capacity up to 600T press for Medium Stamping with welding assembly capability. We are constantly upgrading our equipment to meet the current demands of the stamping industry as well as continually training our employees and machine operators in the latest manufacturing technologies.

#### Capability

##### Machine List :

1000T Mech- 1 Nos  
600T Hyd. – 2 Nos.  
500T-500T-500T-400T Mech. Press Line  
500T-250T-100T-100T Mech. Press Line  
Welding Line

##### Products :

2 Wheeler Fuel Tank, Cross Car Beam  
Assay, Doors

##### Customer :

Royal Enfield, TVS , Motherson, Daimler,  
Automotive Axle Ltd



# Our Fabraction Plant -5



**Maval Unit**

## Heavy Fabrication Shop – Maval , Pune

Our Service Centre is an intermediary between Steel Producers and the end-users. It is one of the main link in the steel supply chain. We endeavor to supply steel in exact quantity, in customized form and in exact time that customers require. This makes the steel immediately usable by the customer which greatly reduces wastage, consumer time and inventory carrying cost.

### Capability

#### Machine List :

Cut to Length,Cut to Size,Re-Shearing machine, Plasma Machine,OxyFuel Machine ,Press Break Machine-6mtr , Weigh Bridge, Gas Cutting Machine, Rolling Machine , Hydraulic Press Break Machine

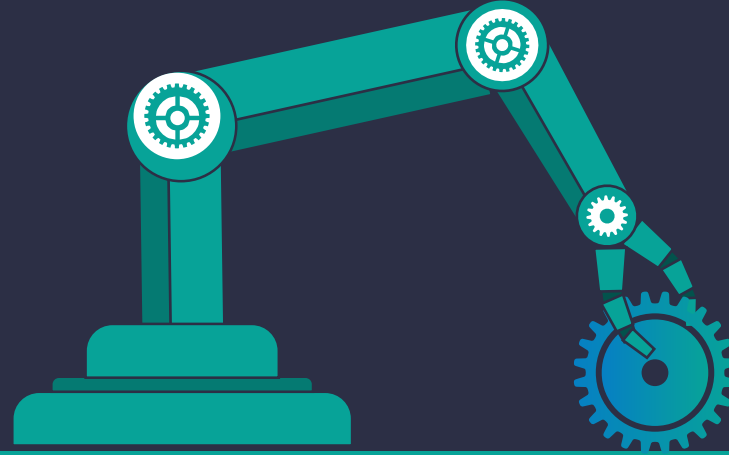
#### Products :

Profile Precision Cut Parts , CTL , CTS , PEB , Assemblies & Custom Fabraction

#### Customer :

Shakti, Caterpillar, Indian Railways, BEML, Terrex, L&T, Indus RockTool, Electromech etc.





# Tool Making @ Jyoti

Making & delivering high Quality Tools for Robust Products

# Simulation

Case study : Simulation Process Plan



## SIDE PANEL

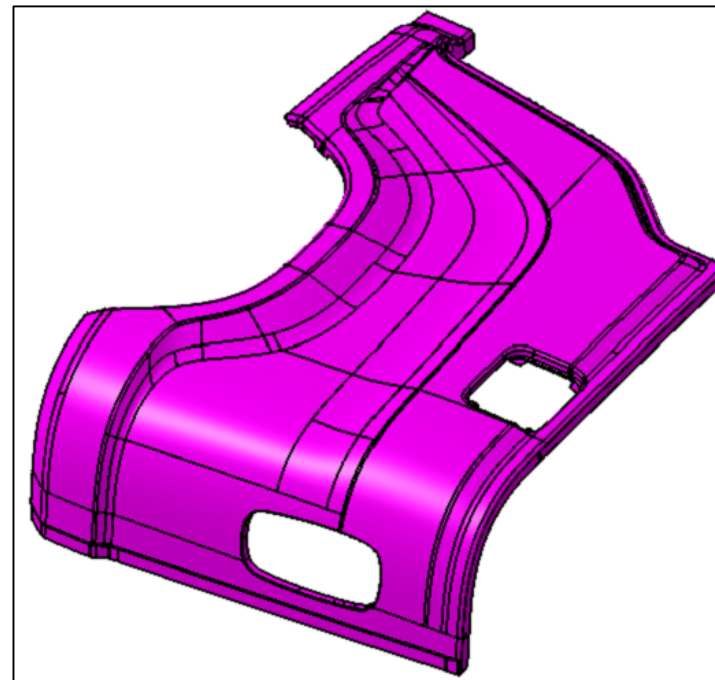
**Customer: TVS**

## PROJECT : SIDE PANEL

Parameter	Value
Material	BHS220
Thickness (in mm)	0.8 mm
UTS	331 MPa
Yield strength (MPa)	208 MPa
'r' bar r0 / r45 / r90 (min value)	1.8
'k' value (MPa)	575.5
'n' value (min value)	0.22
Coefficient of friction	0.125

### DATA RECIVED ON :- 03.11.2022 (REV04)

 G4224889.stp	02-11-2022 03:03 PM	STP File	12,459 KB
 G4224899.stp	02-11-2022 03:03 PM	STP File	10,762 KB



OP.NO.	DESCRIPTION
OP-10	DRAW
OP-20	TRIM & C-TRIM, PIE
OP-30	TRIM, FL. DOWN & C- FLANGE
OP-40	FL. DOWN, PIE, C-BEND,RST.



# Simulation Design

Simulation services at customer's end

## Output / Deliverables of Feasibility Study

Macro Level Forming Simulation Report (Thinning & Fld)

Sheet Metal Stamping Process Details (Draw/ Trim /Flange/Cam Cut Etc.)

Force Required For Each Operation Hence Press Capacity

Blank Size / Input Raw Material Size (Part Cost Can Be Estimated)

Suggestions For Weight Reduction (Thickness Change)

Suggestions For Material Cost Reduction ( Edd To DD)

Combining Of 2 Parts To Reduce Handling Cost

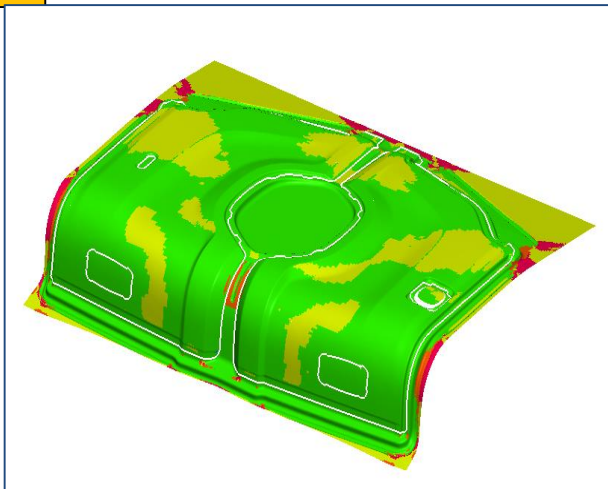


# Simulation

Case study : Simulation Process Plan

## SIDE PANEL

**COMPLETE  
PROCESS  
SIMULATION  
(FLD)**



Review of  
customer input  
translated to  
design input

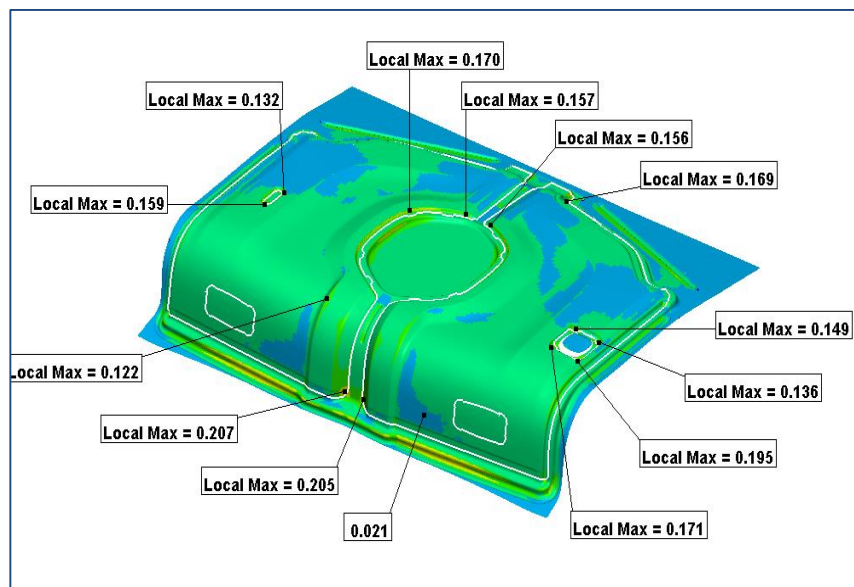
Process and  
Lay-out review  
with customer &  
End die design

Design check  
sheets a  
systematic  
approach to  
checking

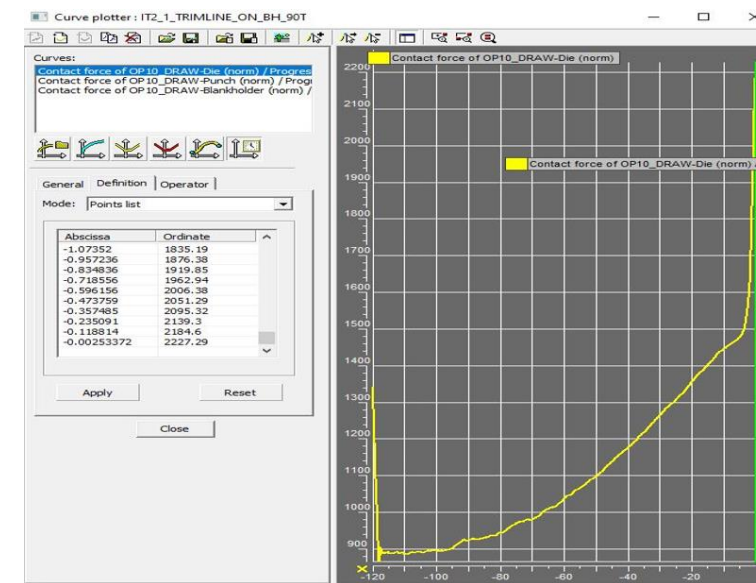
Review with  
customer

Cross functional  
review of design  
cost reduction  
and  
manufacturability

## THINNING



## Required Force Analysis

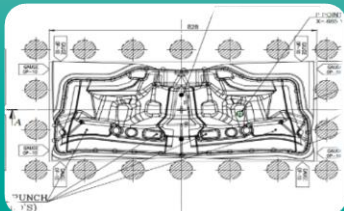






# Design Essentials

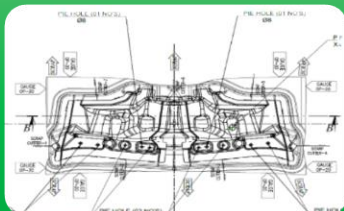
Advantages of Simulations  
engineering



Op-10 Draw die

Following details are mentioned under Draw:

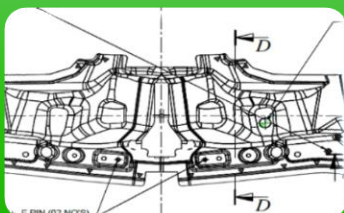
Cushion force , Press tonnage  
Cushion stroke , Cushion lay-out  
Press stroke , Bottoming marker position



Op-20 Trim die

Following details are mentioned under Trim Die:

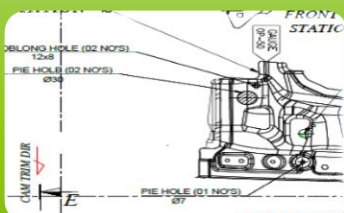
Cutting load hence suitable press  
Stripping load & number of springs  
Scrap cutter position and scrap disposal



Op-30 Flange &  
Restrike Die

Following details are mentioned under Flange die:

Pad line & holding parameters  
Component ejection force  
Pad holding time / pad travel  
Pad restriking area



Op-40 Pierce &  
C-Pierce die

Following details are mentioned under Cam Pi die:

Pad line & holding force parameters  
Cam direction & angles  
Forces required for each piercing & also cam  
capacity. Std Cam details etc.

# Tool Design

Advantages of Simulations engineering

## *DIE MATERIAL SPECIFICATION*

OP NO.	PROCESS	LOWER DIE	UPPER DIE	BLANK HOLDER	PUNCH	LWR PAD	UPR PAD	LWR INSERT	UPR INSERT	LOADING	UNLOADING	REMARK
OP-10	DRAW DIE	FC300	FCD550	FCD550	FCD550	---	---	FCD550	---	MANUAL	MANUAL	
OP-20	TRIM & PIE-1 DIE	FC300	FC300	--	--	--	FC300	D2	D2	MANUAL	MANUAL	
OP-30	FL UP/DN & RST DIE	FC300	FC300	--	--	FCD550	FCD550	D2	D2	MANUAL	MANUAL	
OP-40	TRIM,C'TRIM, C,PIE DIE	FC300	FC300	--	--	--	FC300	D2	D2	MANUAL	MANUAL	
OP-50	TRIM & PIE-2 DIE	FC300	FC300	--	--	--	FC300	D2	D2	MANUAL	MANUAL	

This chart specifies various materials to be used in individual dies at the time of Method Plan preparation

## *PUNCH AND DIE BUTTON SIZES*

SL NO	OP	HOLE DIA	PIE ANGLE	QTY	TOLERANCE	PUNCH SIZE	CLEARANCE	DIE BUTTON SIZE	REMARK
1	OP-20	Ø7	0°	04	+0.2/-0	Ø7.15	0.8t(5%) 0.04 / SIDE		
2		Ø10	0°	04	+0.2/-0	Ø10.15			
3		Ø8	0°	02	+0.2/-0	Ø8.15			
4	OP-40	8x8	0°	02	+0.2/-0	8.15x8.15			
5	OP-50	Ø7	0°	02	+0.2/-0	Ø7.15			
6		Ø8	0°	02	+0.2/-0	Ø8.15			
7		Ø30	0°	02	+0.2/-0	Ø30.15			
8		12X8	0°	02	+0.2/-0	12.15X8.15			

Piercing Punch sizes are decided during the Method Plan stage itself and approval from the customer is taken.

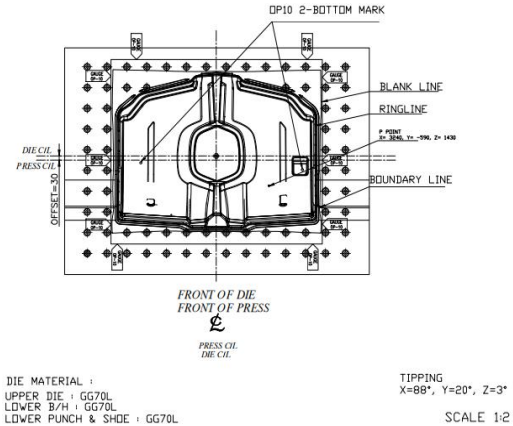
NOTE— HOLE TOL CONSIDERED +0.5/-0 (FINAL AFTER GD&T DATA)

**SIDE PANEL**

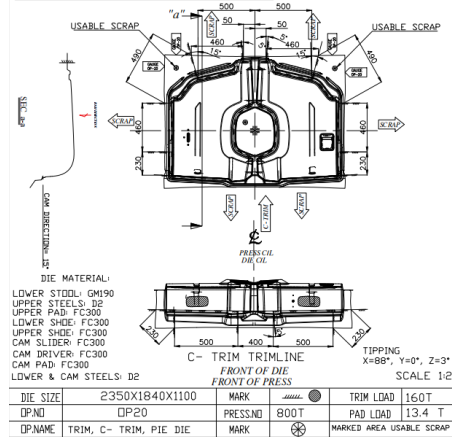
# Process Simulation

Case study :  
Method Plan Detailing (2-D & 3-D)

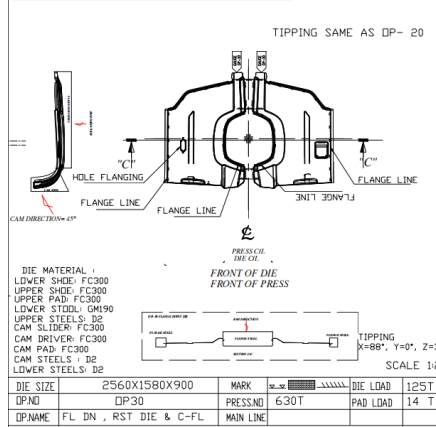
OP-10 DRAW DIE



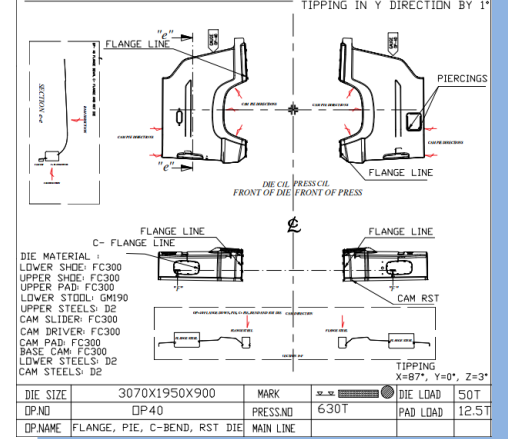
OP- 20 TRIM, C-TRIM AND PIE DIE



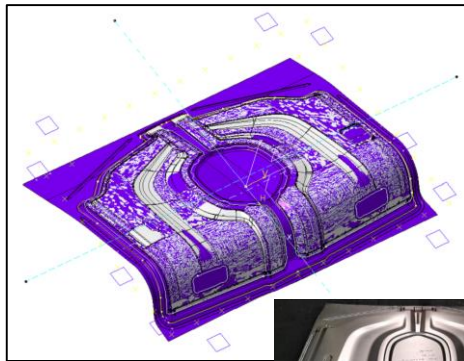
OP- 30 TRIM, FLANGE DOWN, C- FLANGE AND RST DIE



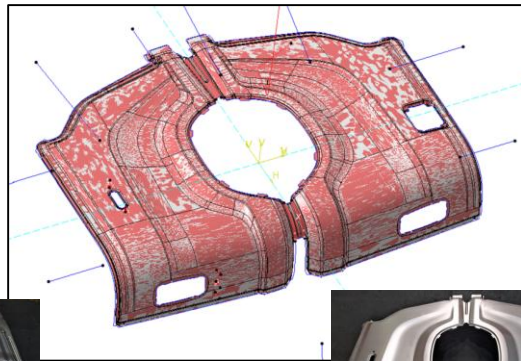
OP-40 FLANGE DOWN, PIE, C- FL, RST DIE



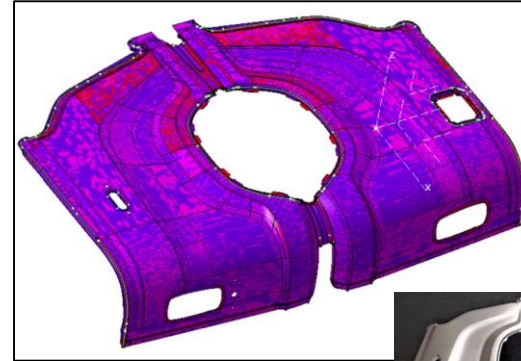
OP10- DRAW



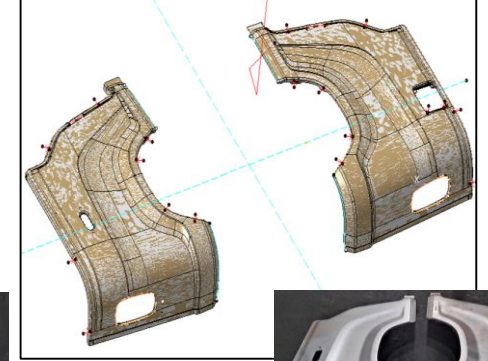
OP20\_TRIM , C-TRIM & PIE



OP30\_TRIM , FL DWN ,C-FLANGE & RESTRIKE



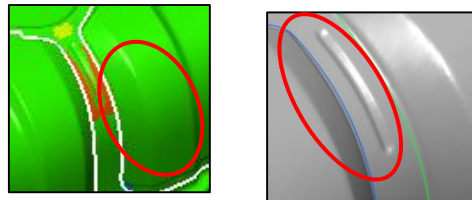
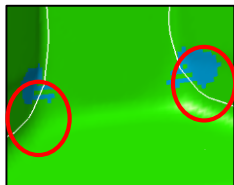
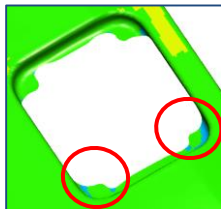
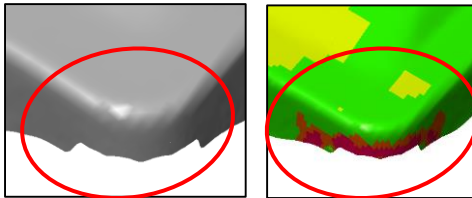
OP40- FLANGE DWN , PIE C-FLANGE & RST



**3D Method Plan**

# Design Recommendations

## SIDE PANEL

<u>Observations, Comments &amp; Recommendations</u>			
S.NO	OBSERVATIONS	IMAGES	RECOMMENDATIONS
1	Compression Is Observed At Highlighted Region (Ref Slide 06)		No physical wrinkles only compression.
2	Thinning Is 20.7% At Highlighted Area. (Ref Slide 06)		Local region only accept As it is.
3	Thinning Is 24.3% At Highlighted Area. (Ref Slide 06)		Local region only accept As it is.
4	Compression Is Observed At Highlighted Region (Ref Slide 11)		Compression is there no physical wrinkle observed. Accept as it is.

Case study :

Design Recommendation for component formability

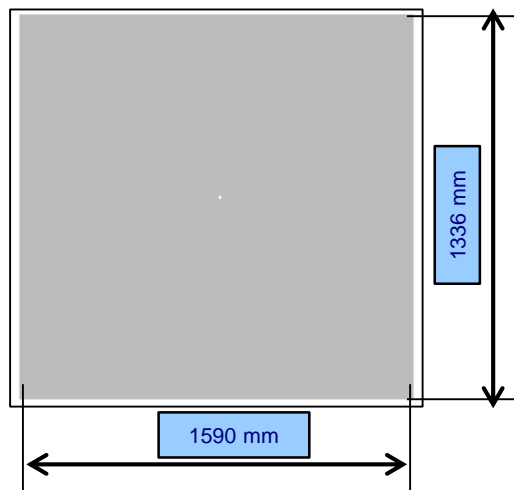


# Optimization

Case study : Design Recommendation for component formability

## SIDE PANEL

### Existing Project



#### INPUT :

• BLANK SIZE-1590 X 1336 X 0.8 mm

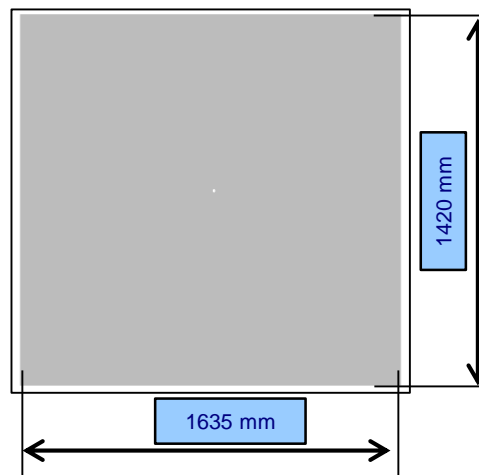
• RUNNING BLANK SIZE-1580 X 1350 X 0.8 mm

#### YIELD CALCULATION:

• BLANK WT / INPUT WT -13.357 Kg  
• FINISHED PART WEIGHT(2COMP)-8.372 Kg  
• YIELD % - 62.67 %

### New Project

#### ITERATION - 1



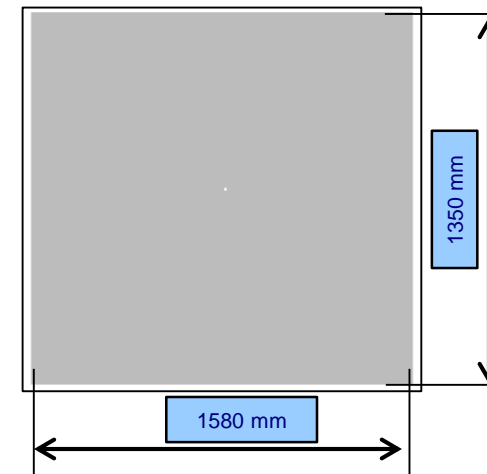
#### INPUT :

• BLANK SIZE-1635 X 1420 X 0.8 mm

#### YIELD CALCULATION:

• BLANK WT / INPUT WT -14.59 Kg  
• FINISHED PART WT(2COMP)-8.454 Kg  
• YIELD % - 57.95 %

#### ITERATION - 14 FINAL



#### INPUT :

• BLANK SIZE-1580 X 1350 X 0.8 mm

#### YIELD CALCULATION:

• BLANK WT / INPUT WT -13.62 Kg  
• FINISHED PART WT(2COMP)-8.495 Kg  
• YIELD % - 63.34 %

**BLANK SIZE MADE COMMON WITH RUNNING BLANK SIZE**



# Tool Room

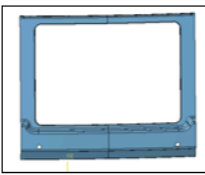
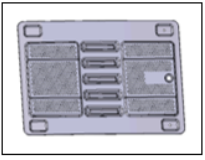
Production tracker & update

## Toolings Development Schedule (Micro Level)

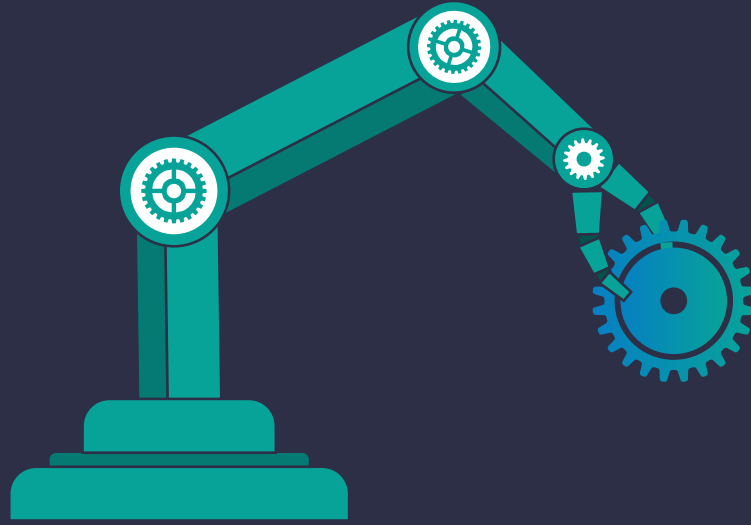
Project - U123

Date : -01-Jan-2021

E Feasibility	DA Design Approval	C Casting/Malt	F Fitting	A Assay	T1 T1 Trial	H Hardning	C Correction
D Design	P Pattern	2D 2D CNC	3D 3D Design	T0 T0 Trial/Spotting	T3 T3 Trial	RM Trial RM from C	B/O Buy-Off 1

Sr. No	Part Name / NO	OP NO	Process	Toolings Information					MFG Locati on	Support	Month																								59	60		
											NOV						DEC						JAN						FEB									
				Week	45	46	47	48	49	50	51	52	53	54	55	56	57	58	59	60																		
				Date	02-Nov	09-Nov	16-Nov	23-Nov	30-Nov	07-Dec	14-Dec	21-Dec	28-Dec	04-Jan	11-Jan	18-Jan	25-Jan	01-Feb	08-Feb	15-Feb																		
Date	08-Nov	15-Nov	22-Nov	29-Nov	06-Dec	13-Dec	20-Dec	27-Dec	03-Jan	10-Jan	17-Jan	24-Jan	31-Jan	07-Feb	14-Feb	21-Feb																						
L mm	W mm	H mm	Wt Kg	MFG Locati on	Trial Raw material																								Buy-off									
1		10	Draw Die (Combine)	1500	1350	600	4800	J003	J23801-4935	D	D	P		C	C	C	2D	2D	F	3D	3D	A	A	A	A	A	A	A	T0	T0	T0	T1	T1	H	T3	B/O		
		20	Trim & Pie Die (Combine)	1500	1250	600	4400	J003	J23801-4936	D	D	P		C	C	C	2D	2D	2D	2D	2D	2D	2D	2D	2D	2D	2D	2D	2D	2D	2D	2D	2D	2D	2D	B/O		
		30	Flange, Rest & Flunge Die (Outer)	1400	1200	600	4000	J003	J23801-4937	D	D	P		C	C	C	2D	2D	2D	2D	2D	2D	2D	2D	2D	2D	2D	2D	2D	2D	2D	2D	2D	2D	2D	B/O		
		40	Pierce, C'Pie Die (Outer Only)	1400	1350	400	3000	J003	J23801-4938	D	D	P		C	C	C	2D	2D	2D	2D	F	F	F	F	F	F	F	F	F	3D	3D	A	A	H	T1	T1	T3	B/O
		CF	Check Fixture				0	J003	J23801-4939	D	D	D		C	C	C	2D	2D	2D	2D	F	F	F	3D	3D	3D	3D	A	A	CM	CM					B/O		
2		10	Draw Die (Combine)				0																															
		20	Trim & Pie Die (Combine)				0																															
		30	Louving, Flange Down Die (Tail)	1150	900	400	1600	J003	J23802-4940	D	D	P		C	C	C	2D	2D	2D	2D	2D	2D	2D	2D	2D	2D	2D	2D	2D	2D	2D	2D	2D	2D	2D	B/O		
		40	Piercing 1 (2 Station) (Tail Door)	1750	800	340	0																															
		50	Piercing-2 (2 Station) (Tail Door)	1750	800	340	0																															
			Check Fixture				0	J003	J23802-4941	D	D	D		C	C	C	2D	2D	2D	2D	2D	2D	2D	2D	2D	2D	2D	2D	2D	2D	2D	2D	2D	2D	B/O			
					W			MFG	Week	45	46	47	48	49	50	51	52	53	54	55	56	57	58	59	60													

Buy-off



# Quality Certification

Systems and Process capability



# QUALITY CERTIFICATION

Committed to the high standard of delivery



**ISO 9001:2008 BUREAU VERITAS CERTIFIED  
Tooling Division**

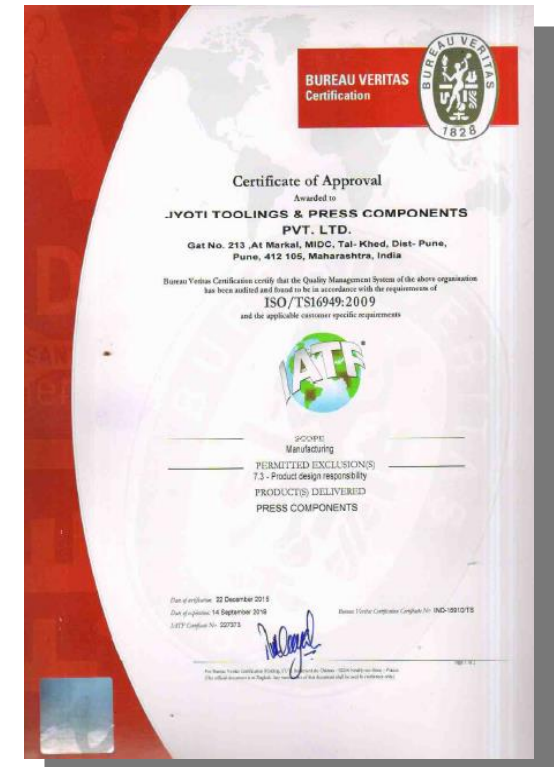
**ISO/TS 16949:2009 BUREAU VERITAS CERTIFIED  
Stamping Division**

Jyoti Group promotes raising the bar by incorporating consistent change with upholding its core DNA of Integrity, Quality and Committed and inclusive working culture. The Group believes on the edifice of growth through accountability and shared prosperity.

**Integrity**

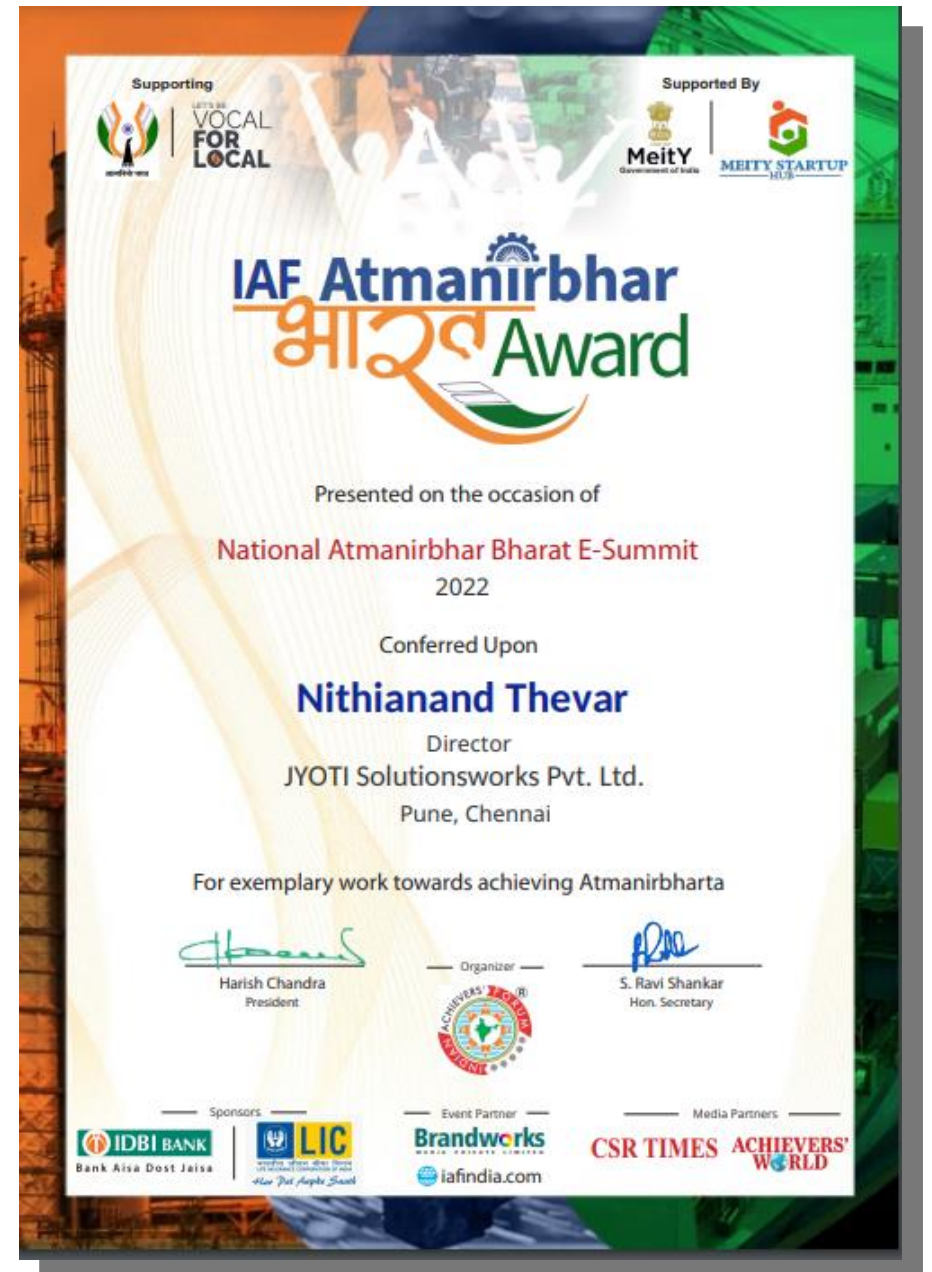
**Quality**

**Committed**



# ATMANIRBHAR AWARD

**For Indegenisation of  
Tools,  
Stamping Parts and  
Assemblies**





# QUALITY CERTIFICATION

Committed to the high standard of delivery



**ISO 14001:2015 AQC CERTIFIED  
Environmental Management System**

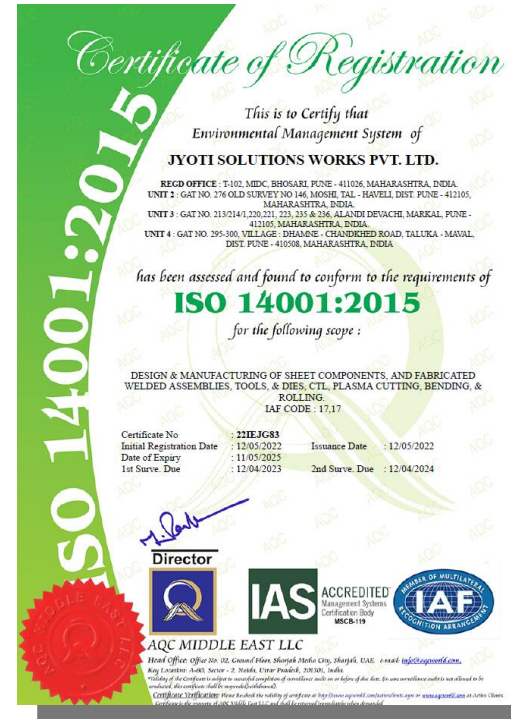
**ISO 45001:2018 AQC CERTIFIED  
Occupational Health & Safety Management System**

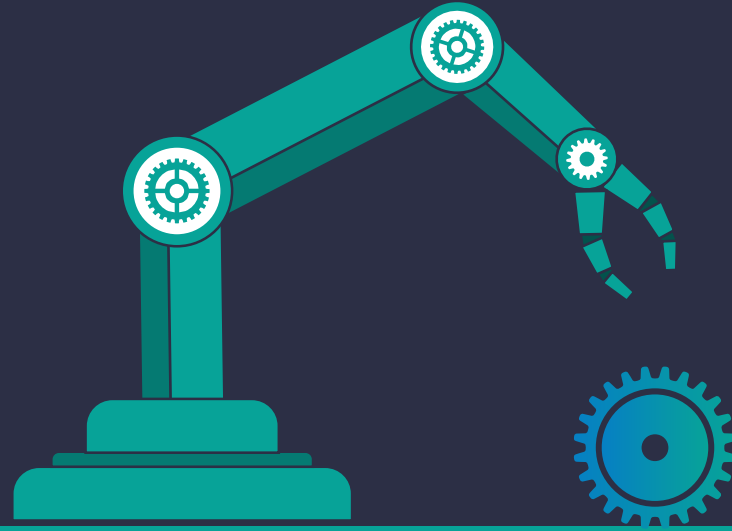
Jyoti Group seeking to use & manage its environmental responsibilities in a systematic manner that contributes to the environmental pillar of sustainability. We also ensure their current thinking and worksite safety practices maintained as per organizational compliance.

**Integrity**

**Quality**

**Committed**





# CSR & Sports Initiatives



# Caring for Health of Workforce



Jyoti Cup  
(Every year)



# Caring for Health of Workforce



<https://www.youtube.com/watch?v=ZZxwvVf2gyo&list=PPSV>



# Sample Customer Feedback



## International Tractors Limited

Head Office & Plant: Village Chak Gajra, P.O. Pipanwala  
Jalandhar Road, Hoshiarpur (Ph) 148022  
Phone: +91-1882-302220, 302221, Fax: +91-1882-302222  
Email: sonalika@sonalika.com

Marketing Office: C-133 A, Sector-2,  
Noida- 201301  
Phone: +91-120-4266860

To,  
Jyoti Tooling & Press Components Pvt Ltd  
T-102,MIDC Bhosari  
Pune  
Attn:-Mr. Nityanand  
Sub :-Appreciation Letter

Dated- 12.02.2020

Dear Jyoti Team,

We take this opportunity to thank all Jyoti Tooling Team members for the excellent quality and services rendered to us in the new products for Fender Assembly for our prestigious Yanmar Project.


We appreciate the high level of professional approach at all stages of execution.

The die quality produces by Jyoti Tooling is in line with Japanese quality. Also, the events and the delivery schedules were in line with our requirements.

We look forward to such repeat performances in all our future projects and wish the entire team greater success in times to come.

With Warm regards

  
Yogeshwar Kumar Gautam  
AVP, Projects & Material

  
Subhash Saini  
Sr. V.P - ACG

INDIA'S 35/110 HP  
HEAVY DUTY  
TRACTOR RANGE



INDIA'S  
3<sup>RD</sup> LARGEST  
TRACTOR COMPANY



WORLD PLANT WITH  
2 LAKH  
PRODUCTION CAPACITY



PRESENCE  
IN OVER  
100 COUNTRIES

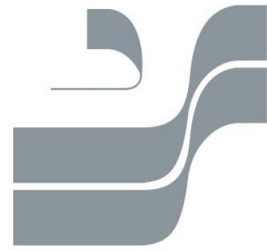


TRUSTED BY OVER  
6 LAKH  
CUSTOMERS



Regd. Office - Park Road Plaza - 1,  
Plot No 2, Commercial Complex,  
Kirti Vihar, Delhi - 110062 (India)  
E-mail: sonalika@sonalika.com  
(CIN-U74699DL1995PL1073241)

website: [www.sonalika.com](http://www.sonalika.com)



# JYOTI

SINCE - 1987

Your Total Sheet Metal Systems Partner

# Thank You

Hope can be take this relationship  
forward ..